



West Virginia Department of Agriculture

Water Quality Monitoring
Program

Beginnings

WVDA's Water Quality Monitoring Program began in July 1998 with only a few streams monitored but has expanded significantly since...

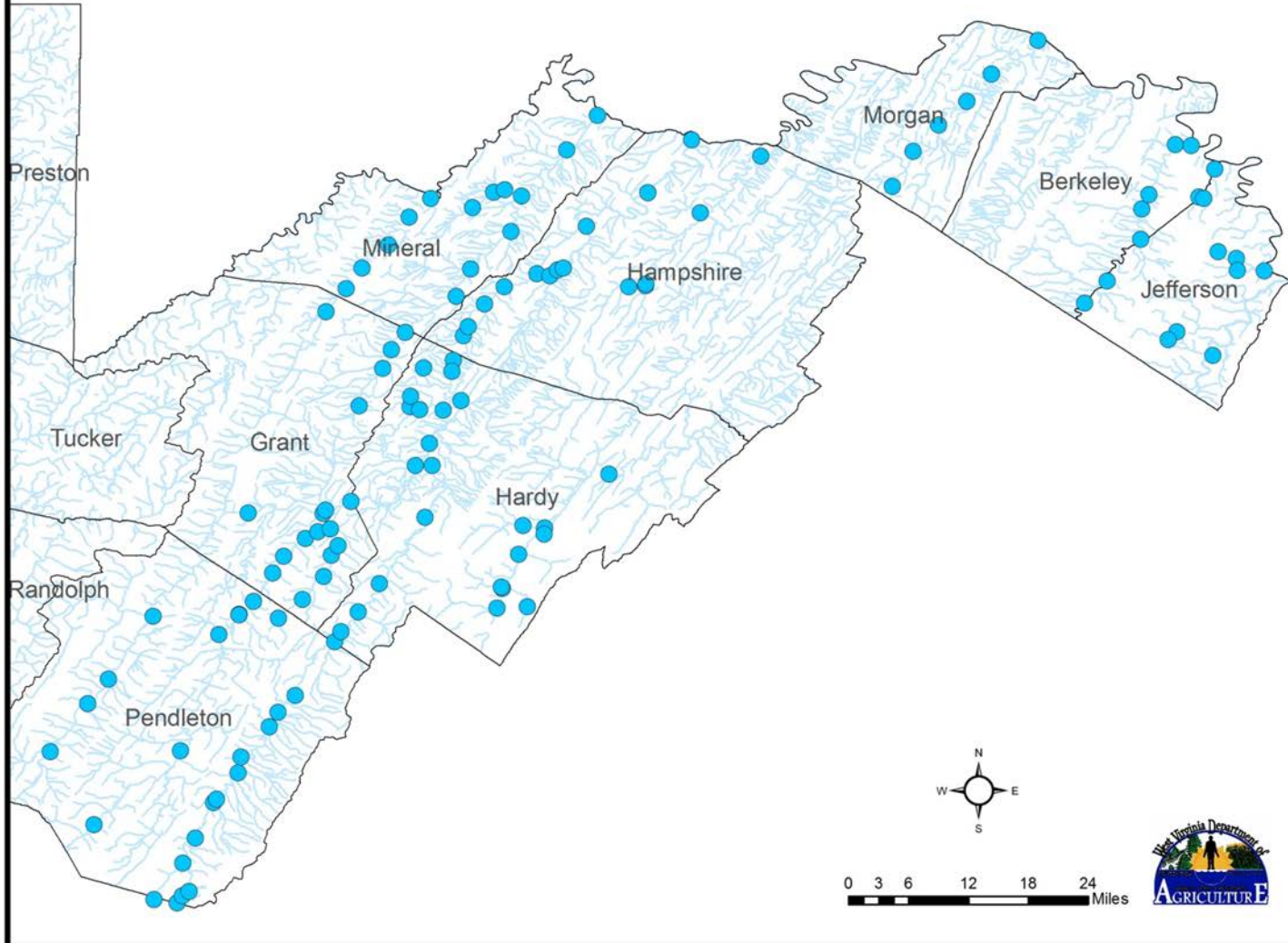
Streams Currently Monitored

- South Branch of the Potomac
- North Fork of the South Branch
- South Fork of the South Branch
- Mill Creek (Grant & Pendleton Counties)
- Mill Creek (Hampshire County)
- Lost River
- Patterson Creek
- Sleepy Creek
- Opequon Creek
- Rockymarsh Run
- Bullskin Run
- Elk Branch
- Elks Run
- Little Cacapon
- New Creek
- Cabin Run

Frequency

WVDA collects water samples at frequencies varying from once per month to five times per month

West Virginia Department of Agriculture Water Quality Monitoring Stations



Sampling Methods



Parameters Tested

- Temperature
- pH
- Conductivity
- Dissolved Oxygen
- Nitrate
- Nitrite
- Ammonia
- Ortho-Phosphate
- Total Phosphorus
- Turbidity
- Total Suspended Solids
- Fecal Coliform

Number of Samples Collected

- Since 1998, the West Virginia Department of Agriculture has collected **over 40,000 water samples**
- Results shared with groups such as:
 - EPA
 - WVDEP
 - Watershed Groups

Other Programs

- WVDA is also currently working with the following groups on water quality projects:
 - Moorefield Wastewater Treatment Plant
 - Hardy County PSD
 - American Woodmark
 - Pilgrim's Pride
 - Private Landowners with Agricultural Concerns
- * **Beginning this year WVDA to begin drinking water tests for local Health Departments**

Other Programs

- WVDA has also partnered with the following organizations on past water quality related projects:
 - Marshall University
 - West Virginia University (WVU)
 - West Virginia Department of Environmental Protection (WVDEP)
 - United States Department of Agriculture (USDA)
 - United States Geological Survey (USGS)

Contact Information

J. Matthew Monroe

Assistant Director – Environmental Programs

West Virginia Department of Agriculture

60B Moorefield Industrial Park Road

Moorefield, WV 26836

304-538-2397

mmonroe@wvda.us