

# **Source Water Protection through Collaborative Efforts:**

## **Collaborative Emergency Response Initiatives**

Carlton Haywood

ICPRB

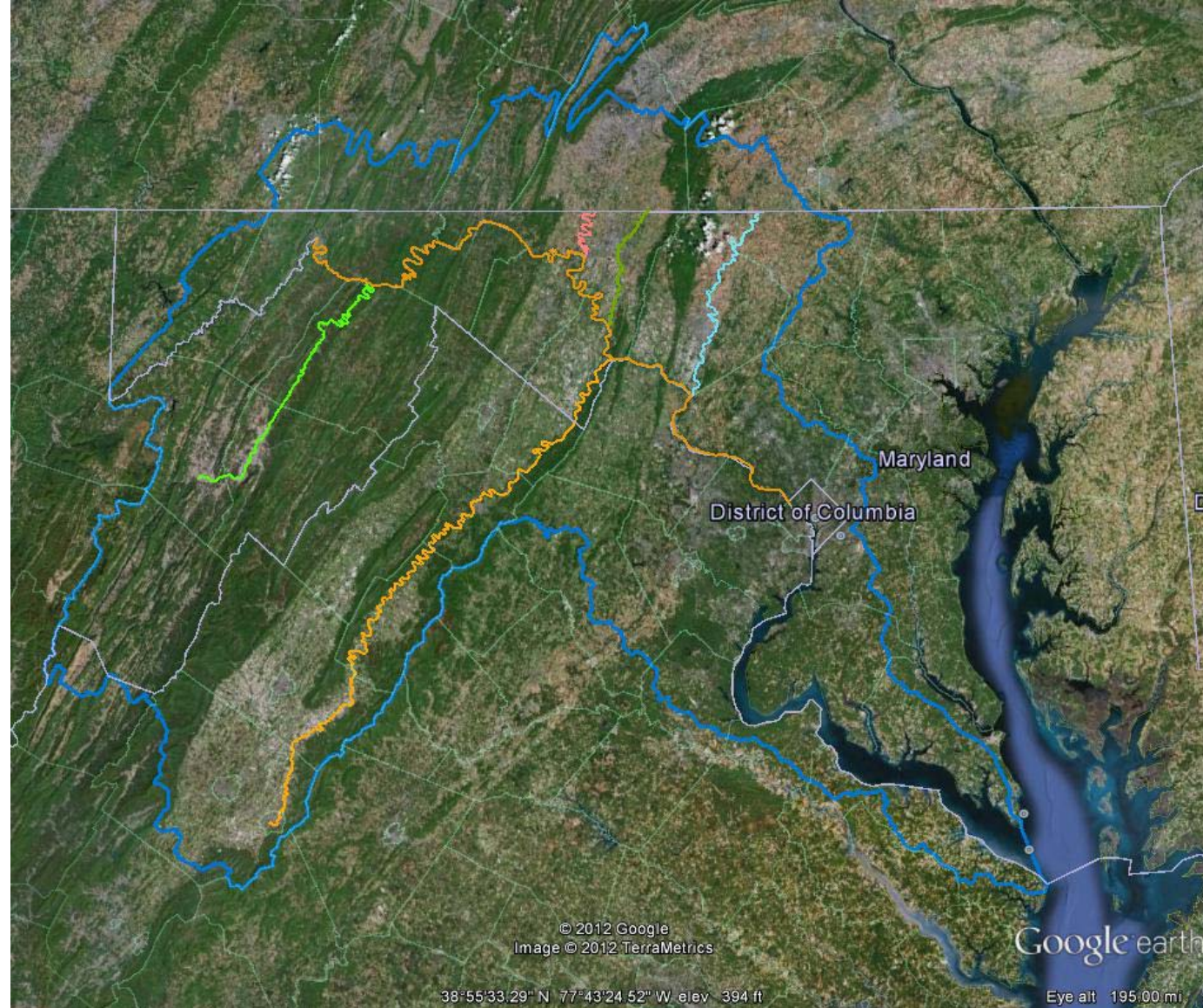
- Opportunities for information sharing during emergencies
- Lessons learned from recent spill exercise

## ICPRB spill travel time model

- Potomac
- Monocacy
- Shenandoah
- Antietam
- Conococheague
- South Branch

Notify downstream utilities and state agencies of

- arrival times
- peak concentration



# Source water protection exercise

- Test communications between utilities.
- Practice public message coordination between utilities.
- Evaluate information systems designed to assist utilities during an incident affecting multiple jurisdictions in the Potomac River Basin.

# Preliminary Lessons Learned

- Exercise very useful in identifying
  - Weak points in communication between agencies
  - Key information needs
- Understanding travel time model strengths and weaknesses
- Have procedures in place for collecting and tracking information
- Builds relationships