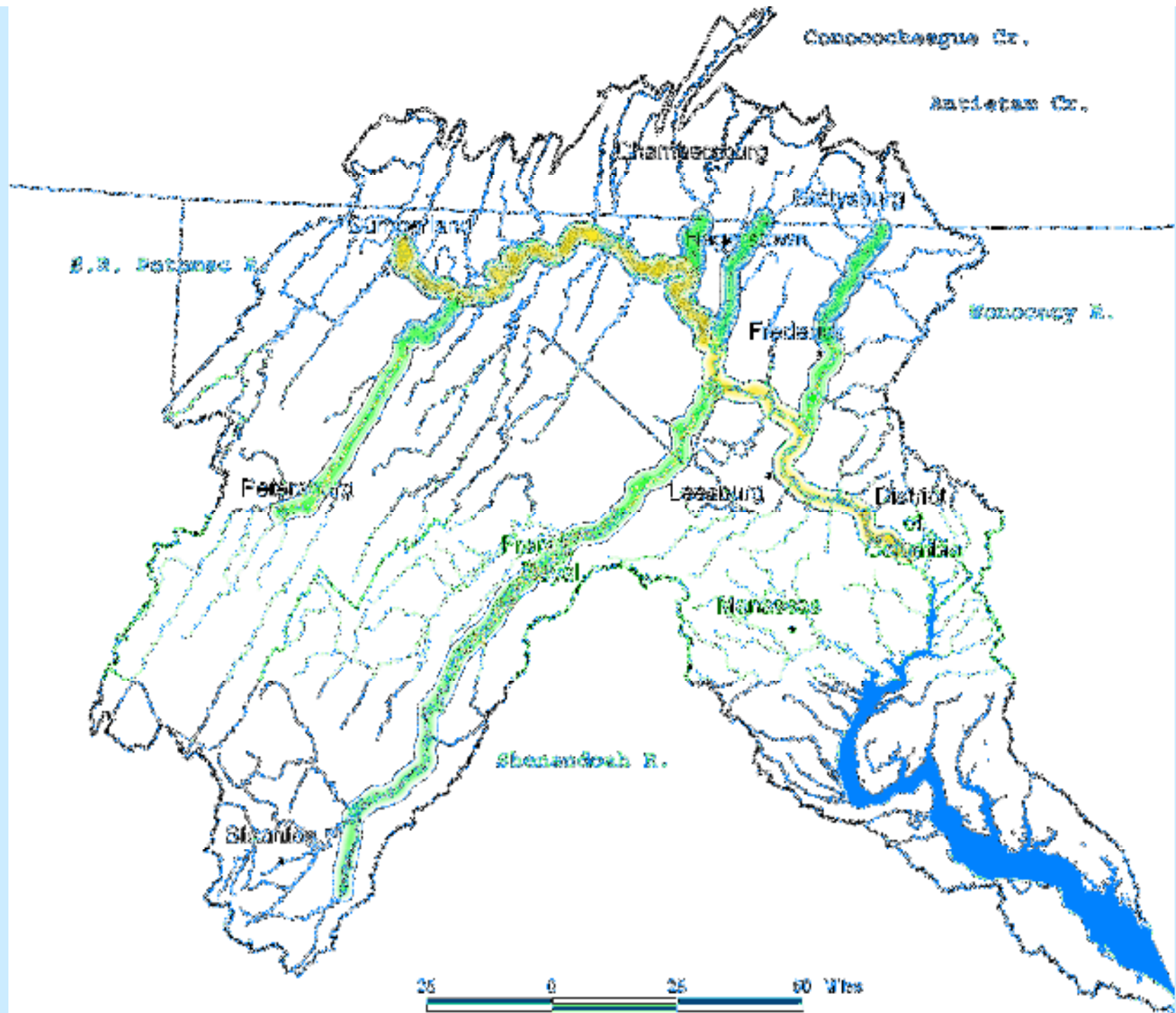
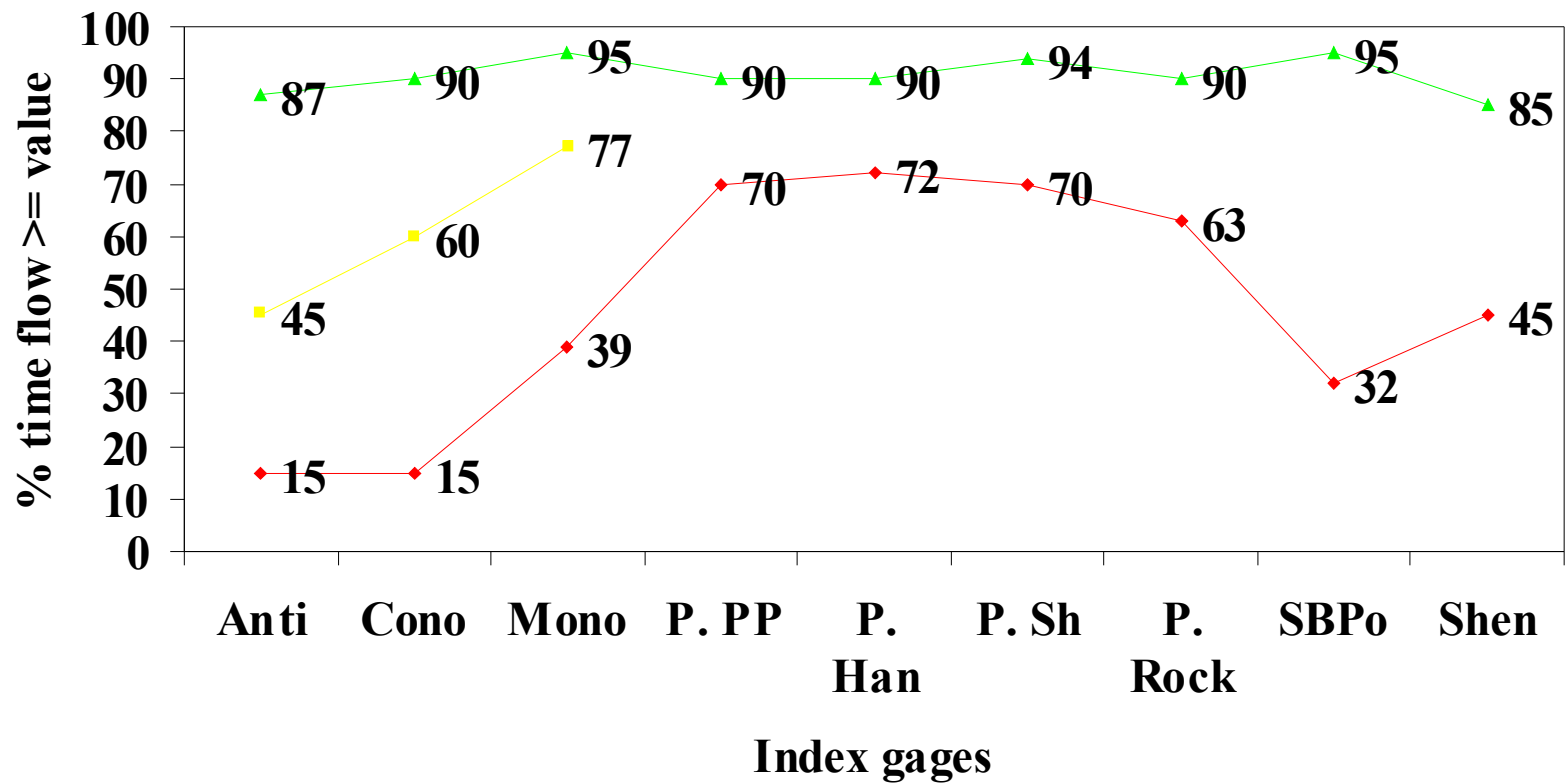


ICPRB Spill Model
and
Time of Travel Analysis



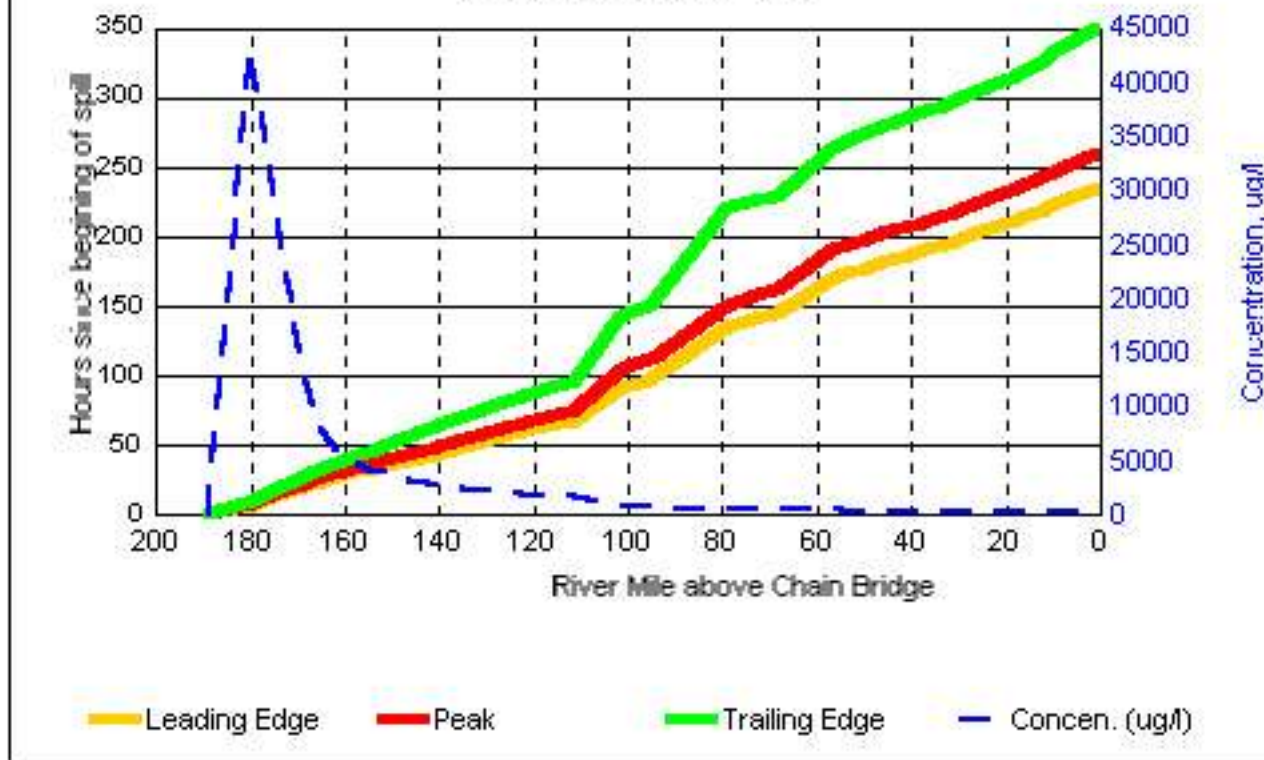
Flow Duration during travel time studies



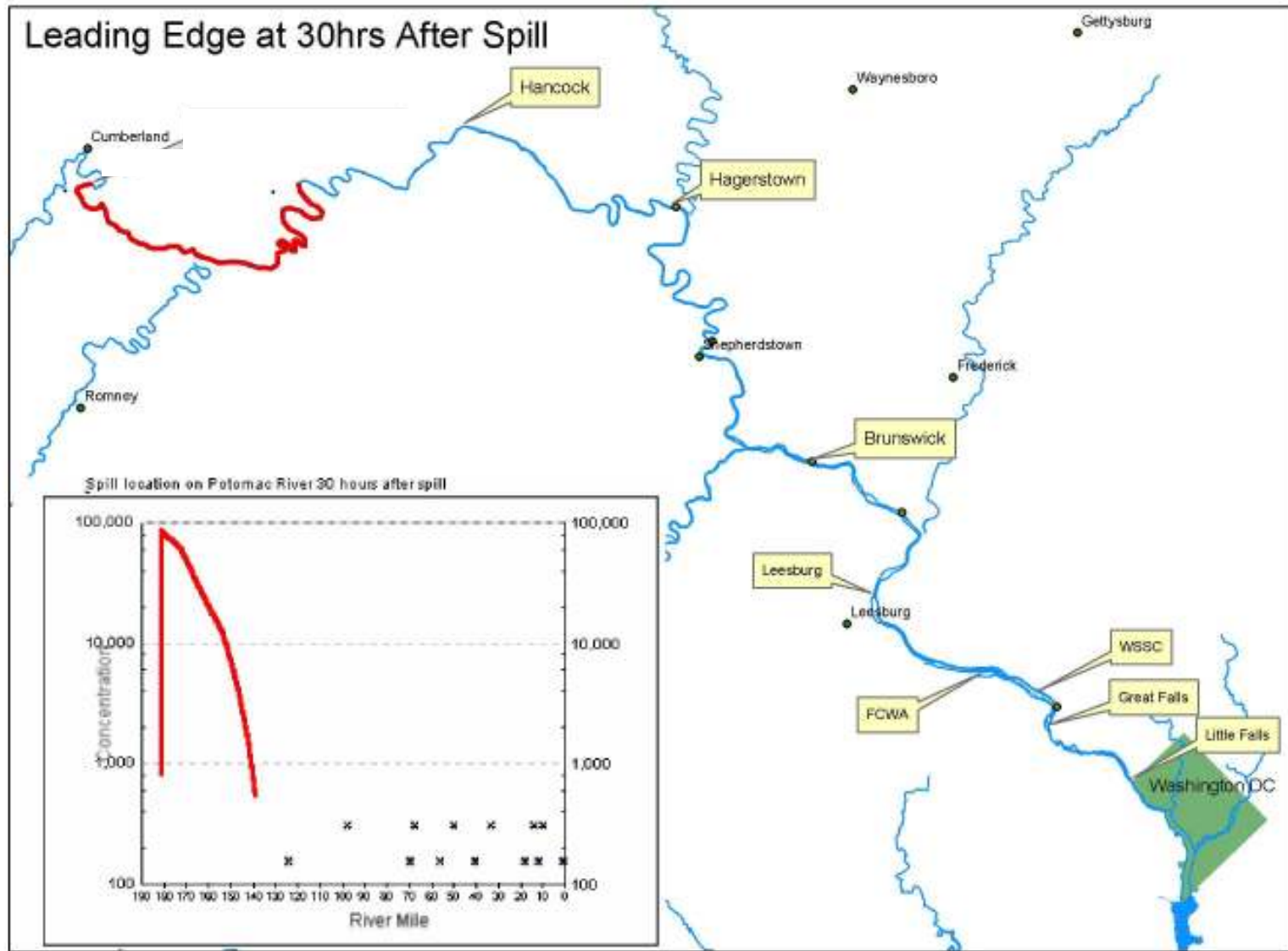
Potomac River Travel Times	RM	Hours after spill			Peak Conc. ug/l
		Leading Edge	Peak	Trailing Edge	
Cumberland, (Wiley Ford Br.)	188.7				
North Branch (RR Br)	180.0	6.6	8.3	11.3	42,897
Oldtown, MD	171.3	17.6	19.3	24.4	19,990
S. Br. Potomac R.	169.0	20.0	22.0	27.7	13,743
L. Cacapon River	165.0	24.3	26.8	33.5	8,304
Paw Paw, WV	160.6	28.9	32.0	39.9	5,316

Spill Travel Time on Potomac River

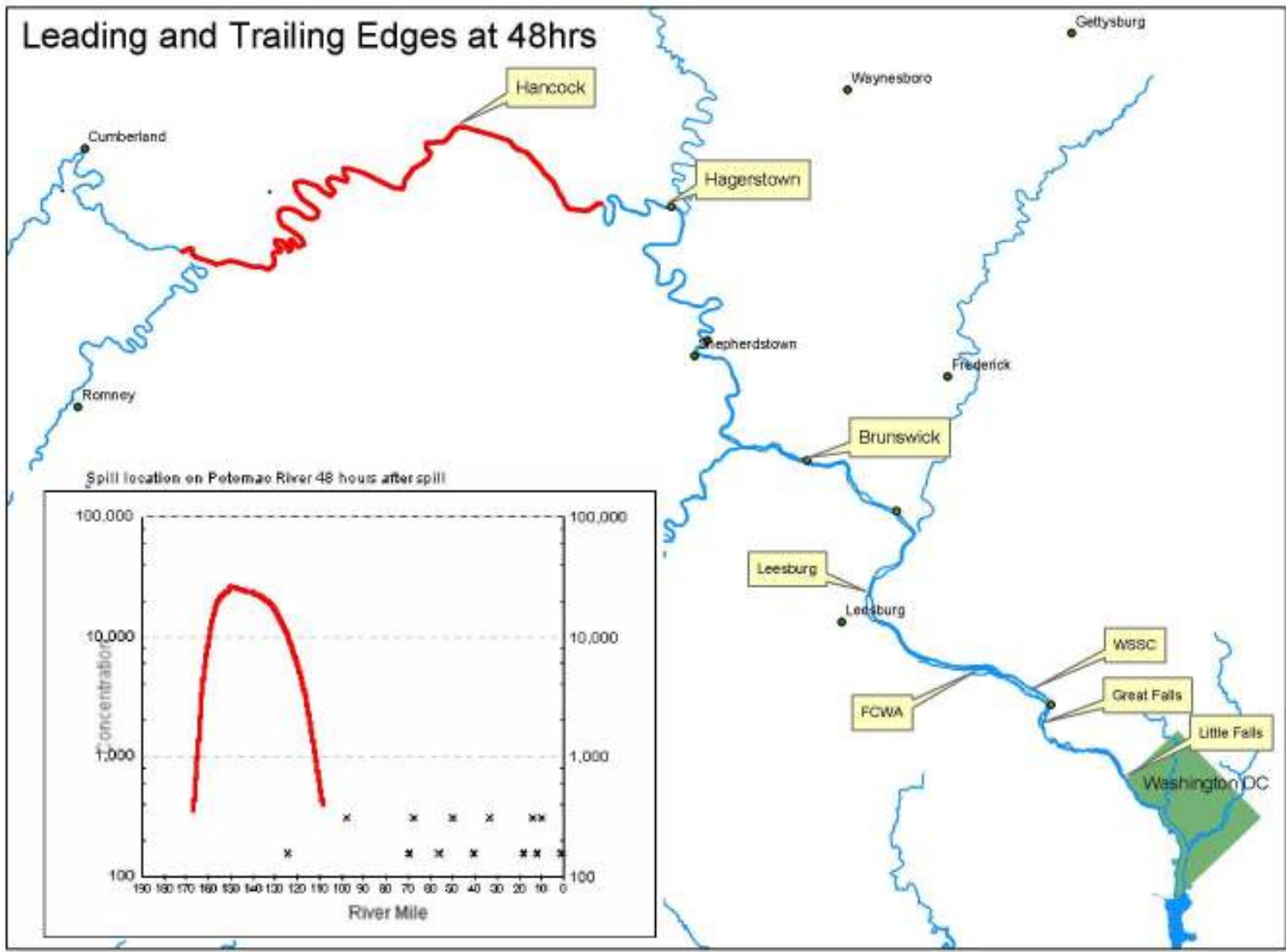
from River Mile 180

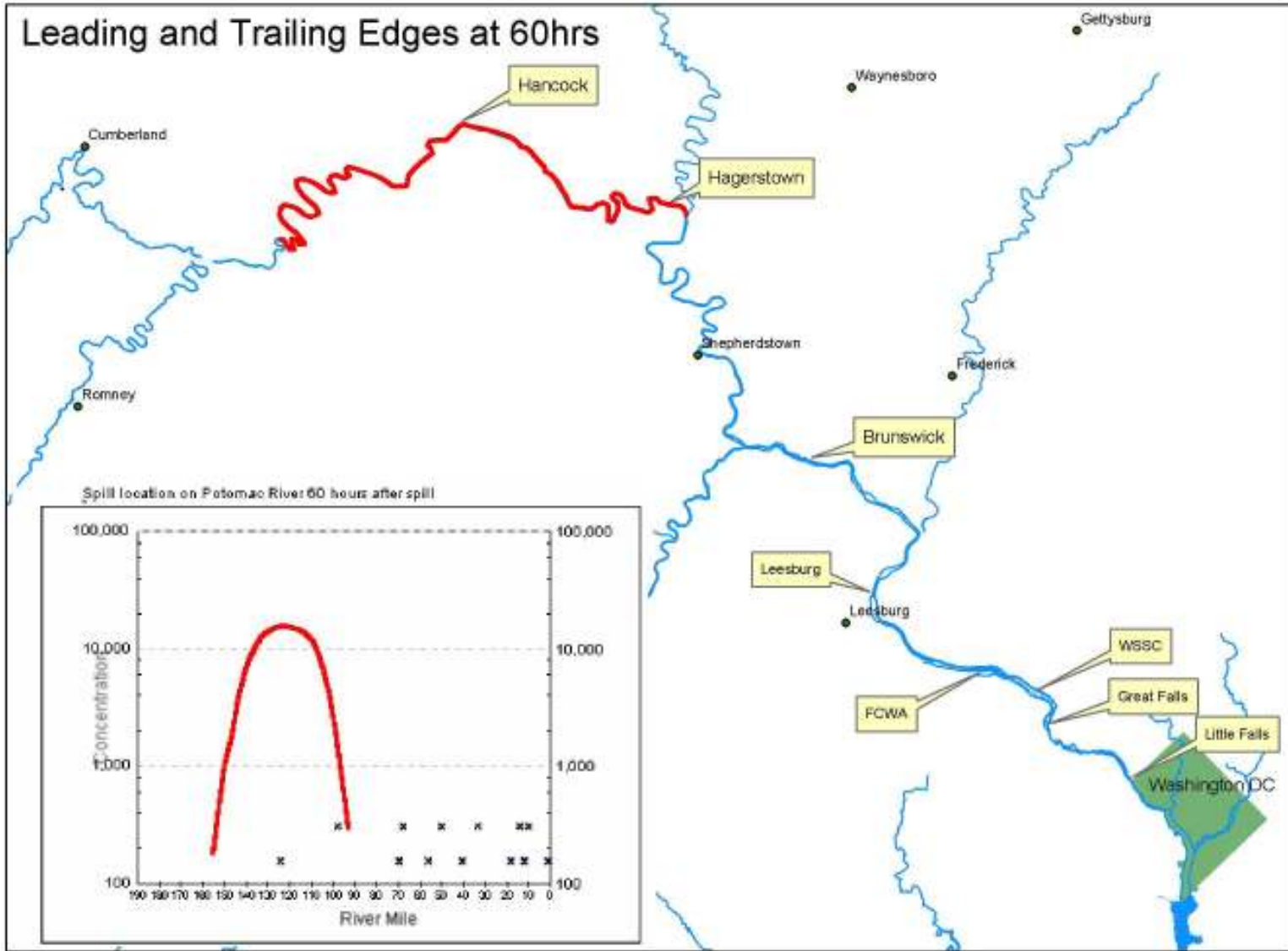


Leading Edge at 30hrs After Spill

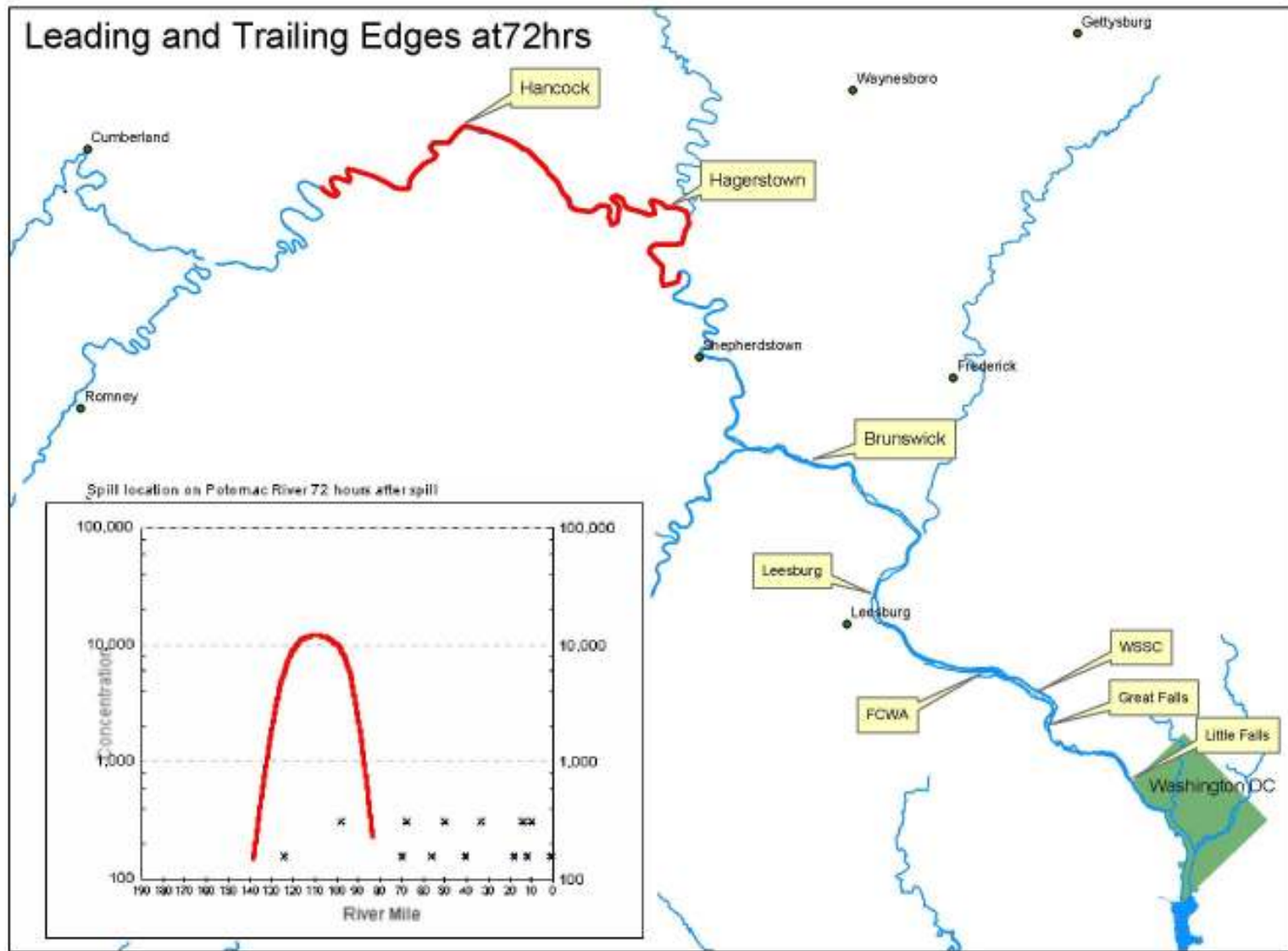


Leading and Trailing Edges at 48hrs

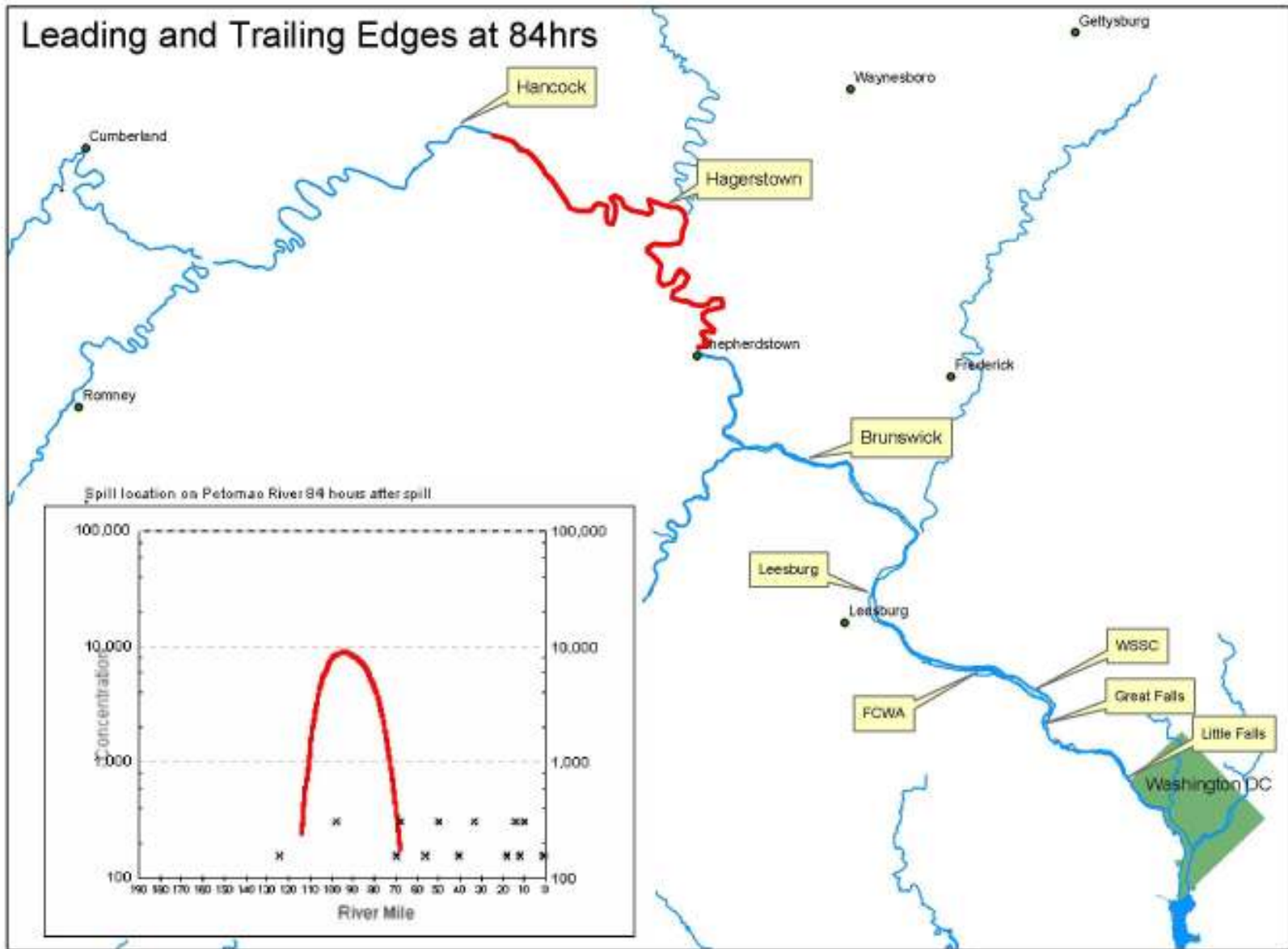




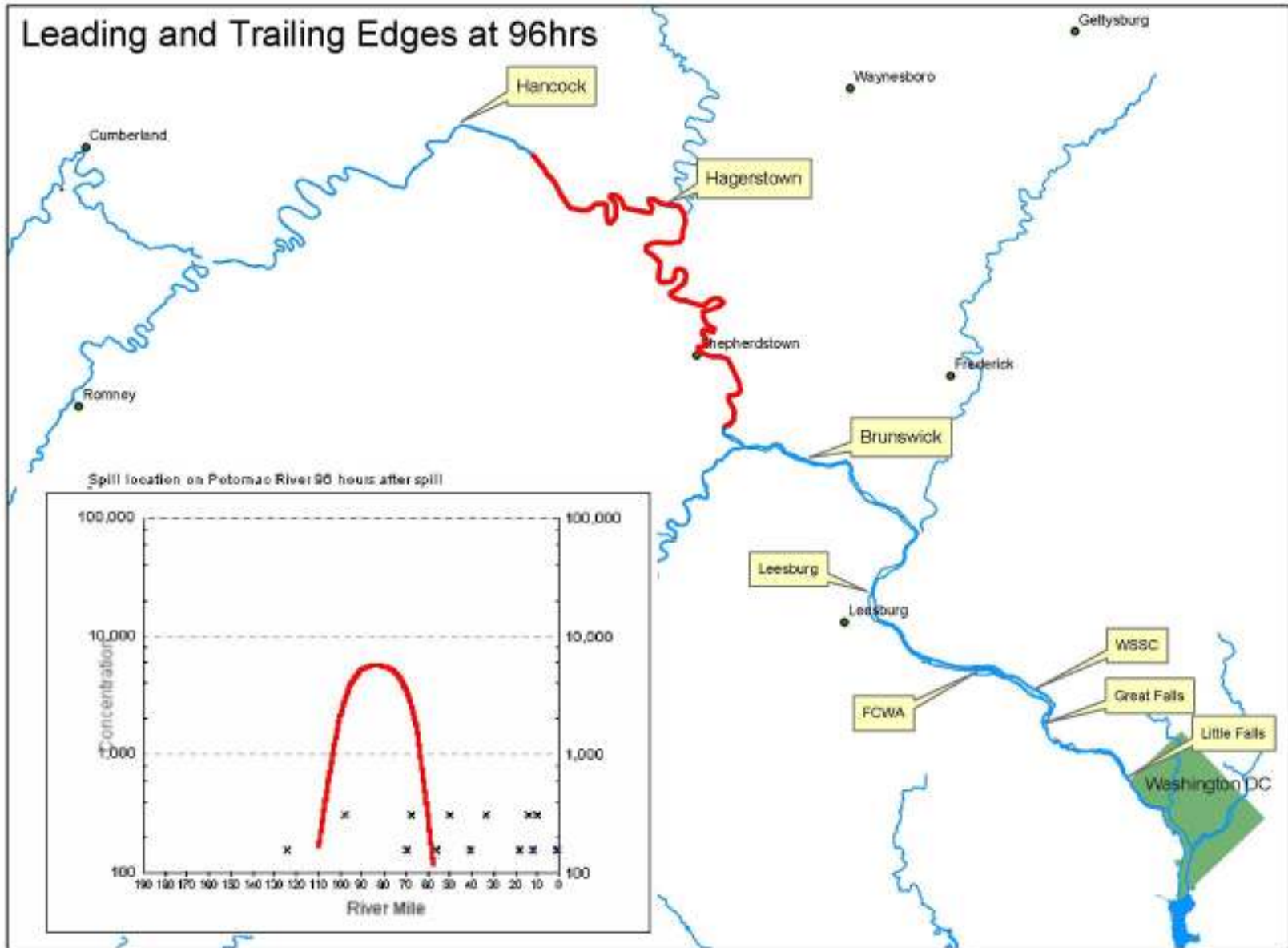
Leading and Trailing Edges at 72hrs



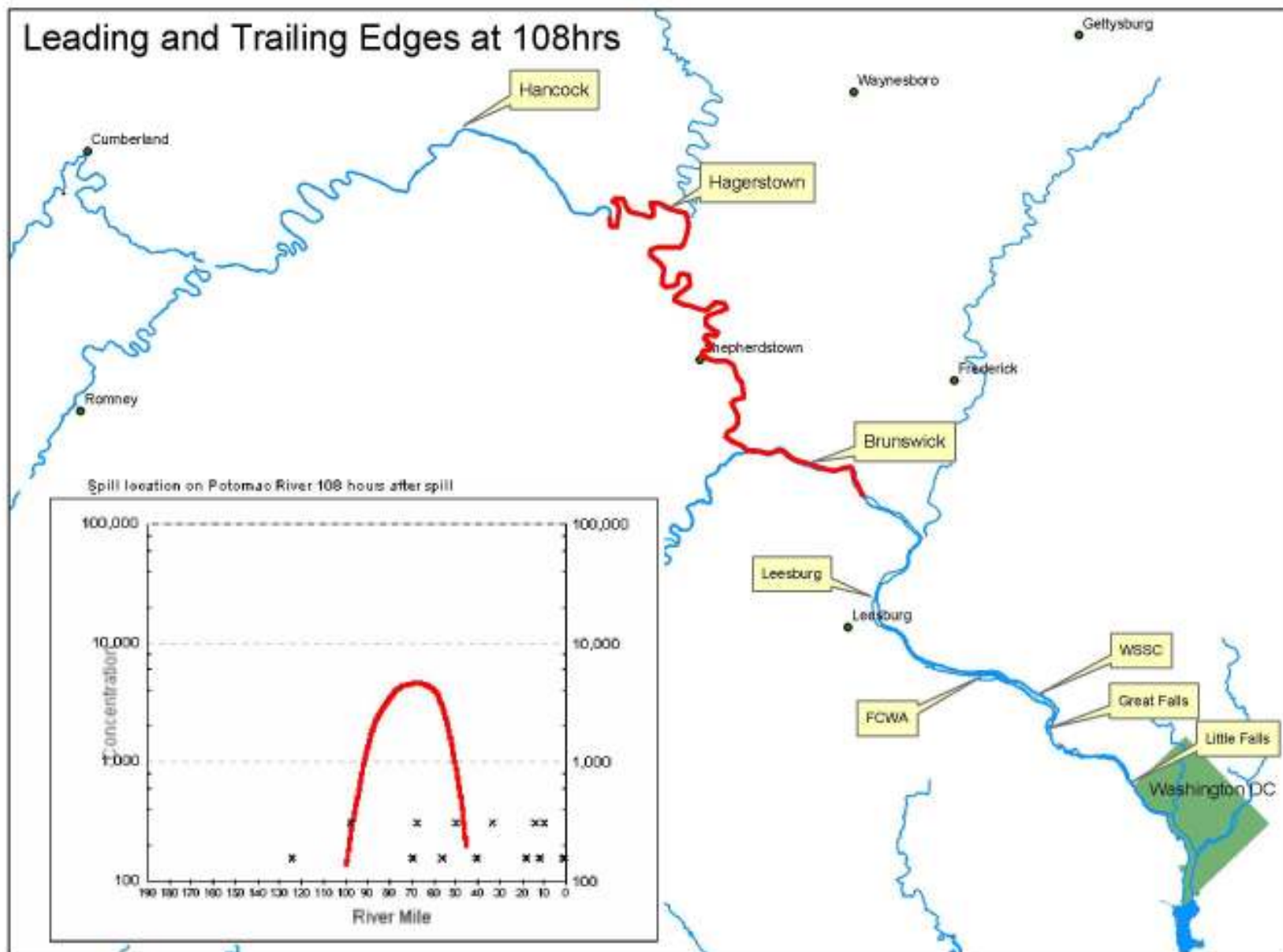
Leading and Trailing Edges at 84hrs



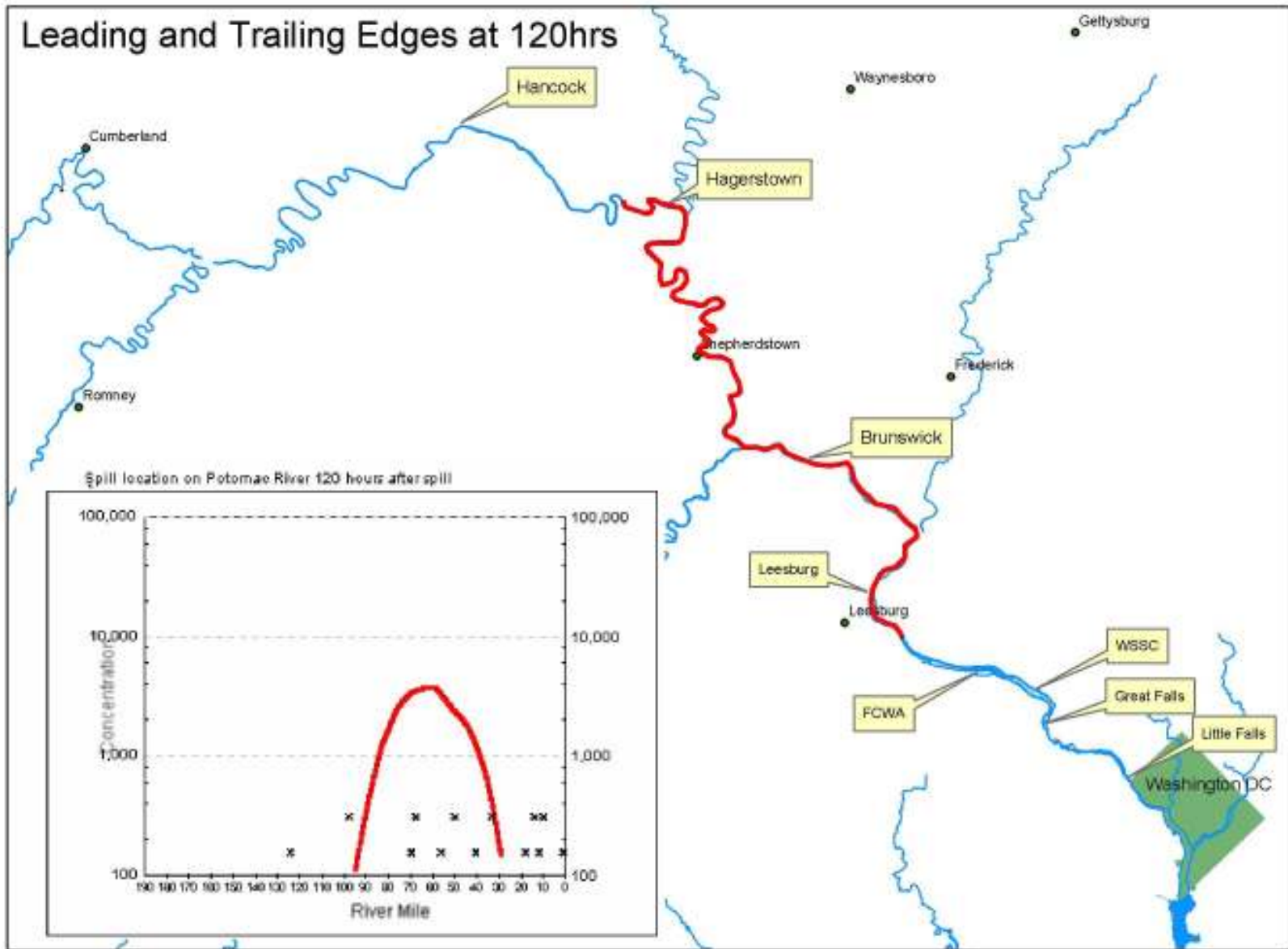
Leading and Trailing Edges at 96hrs



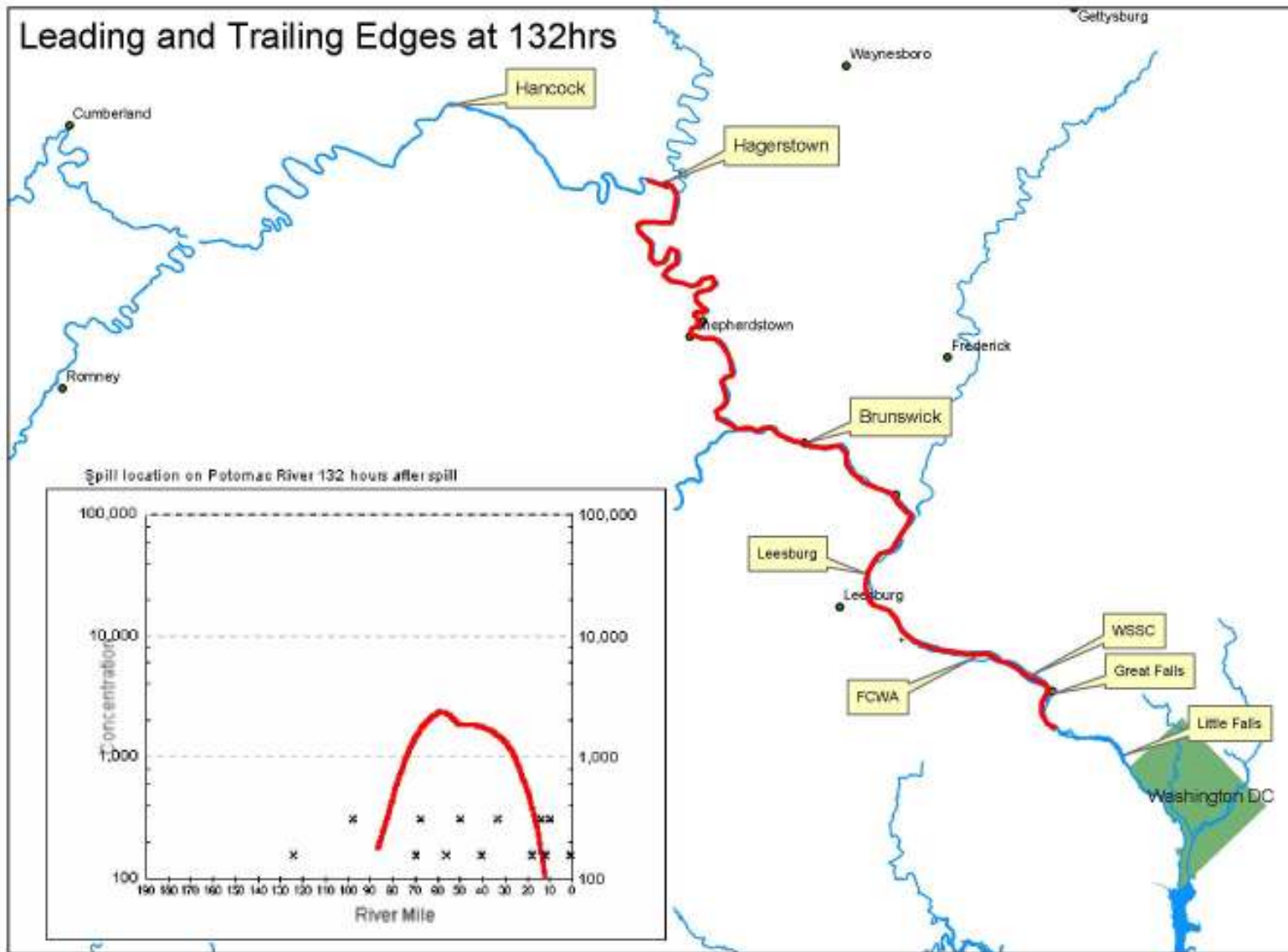
Leading and Trailing Edges at 108hrs



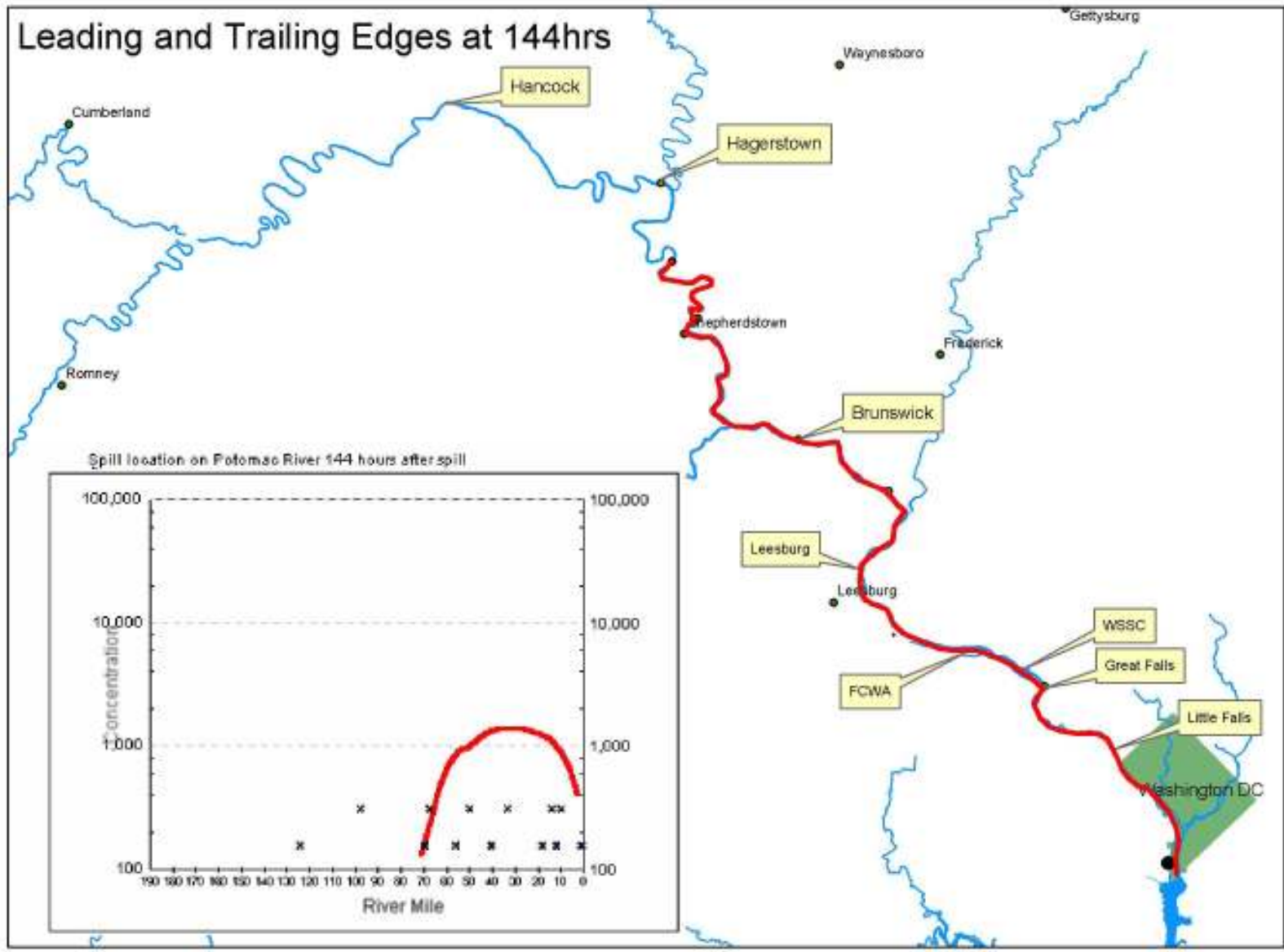
Leading and Trailing Edges at 120hrs



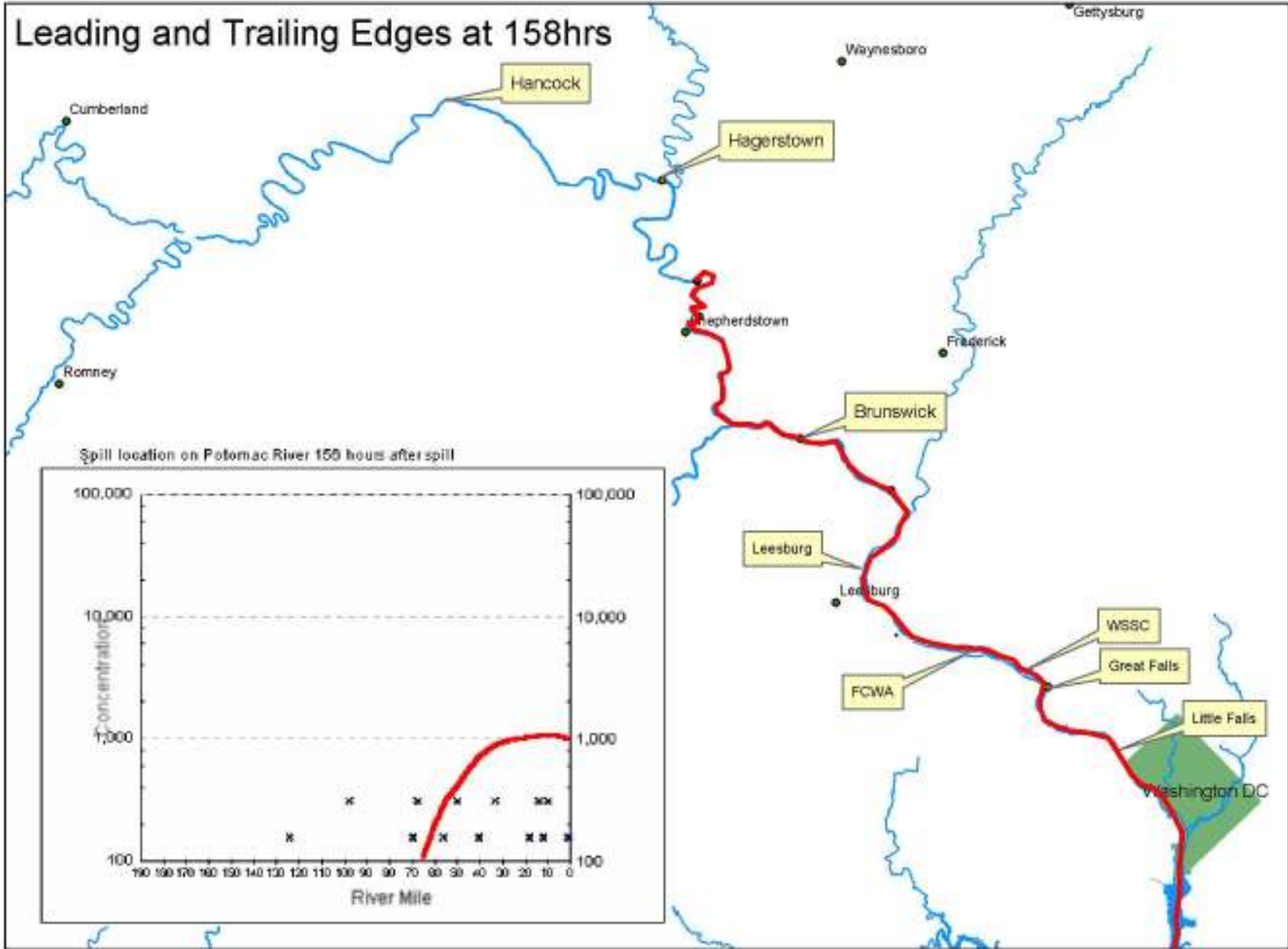
Leading and Trailing Edges at 132hrs



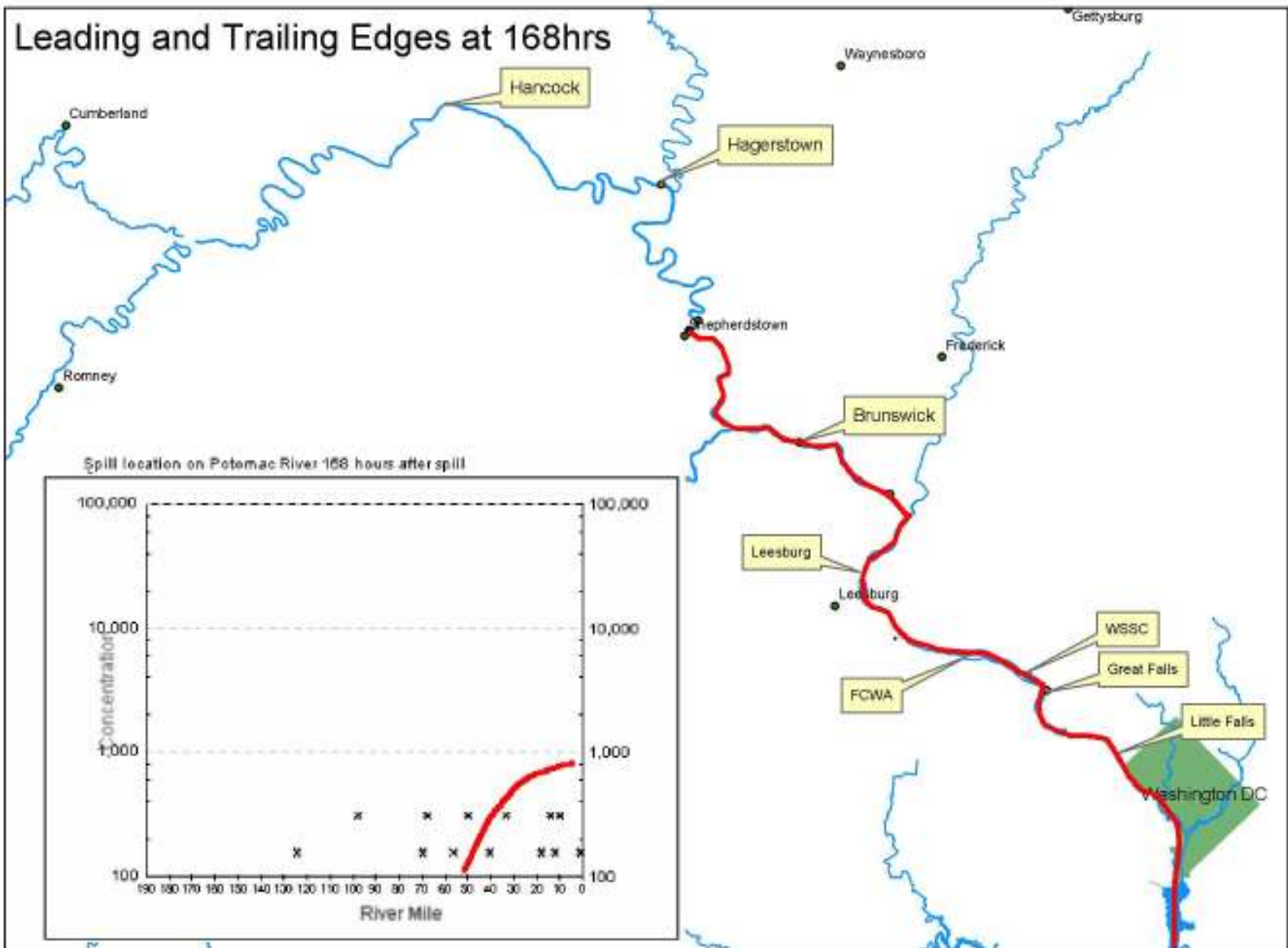
Leading and Trailing Edges at 144hrs

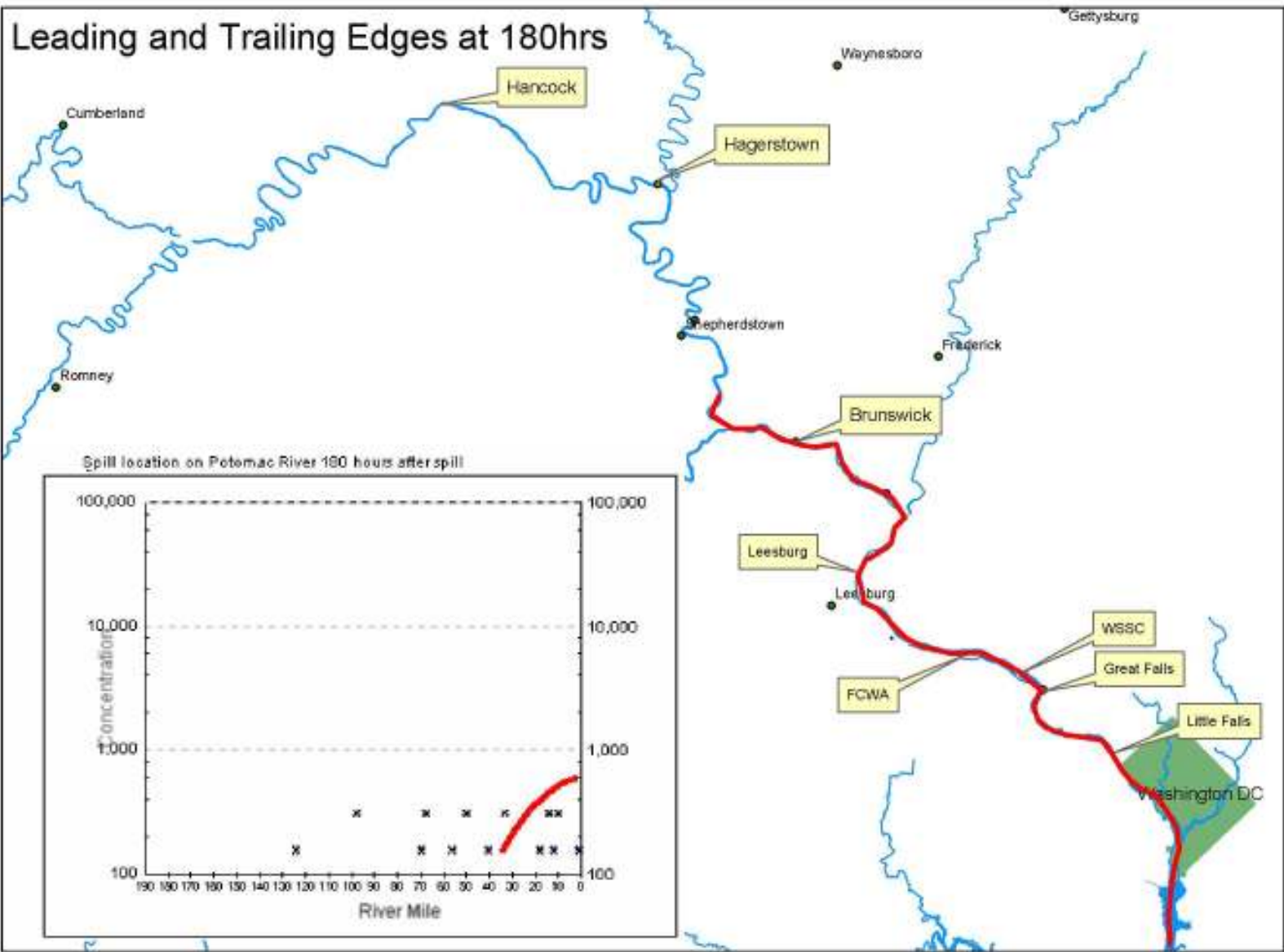


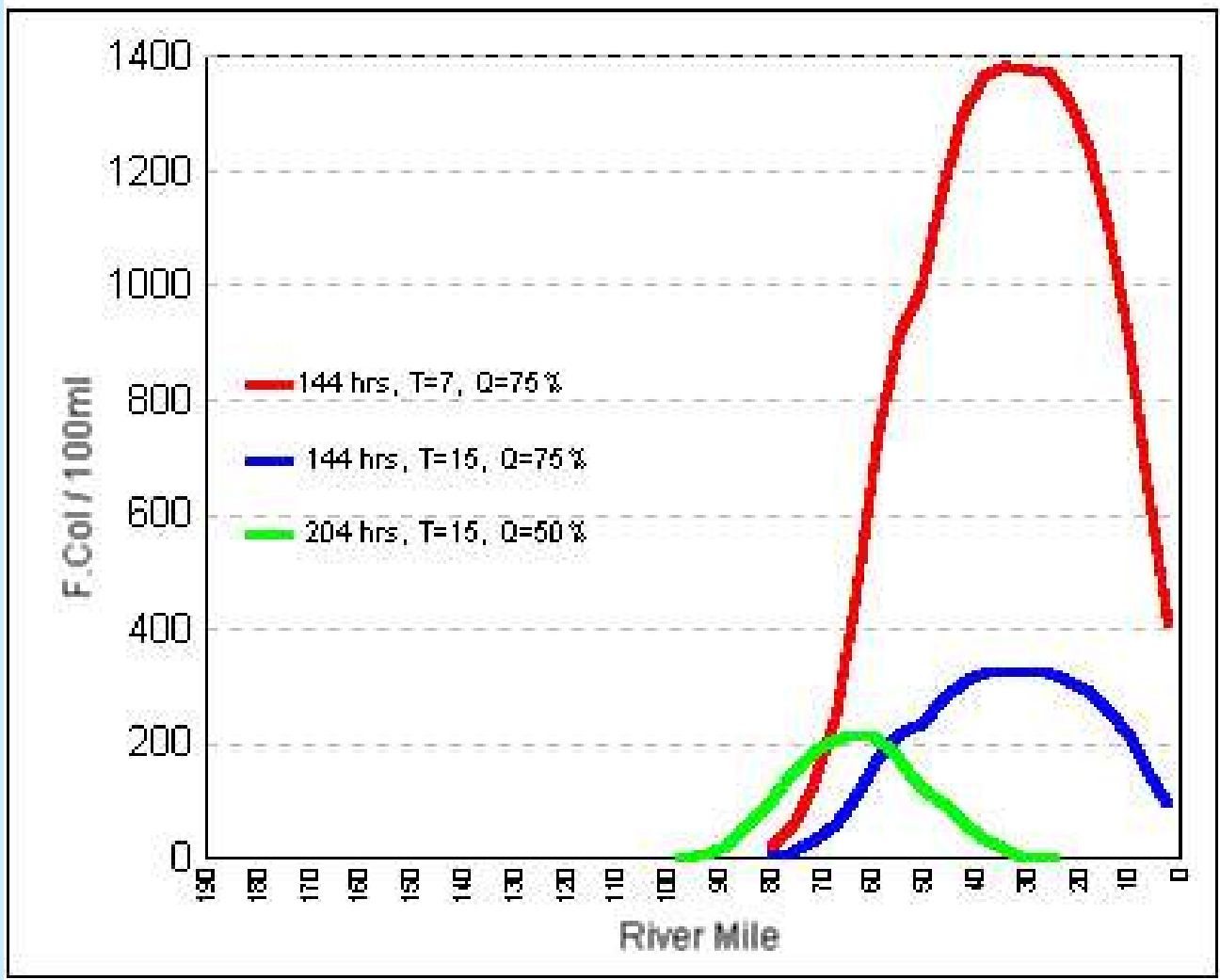
Leading and Trailing Edges at 158hrs



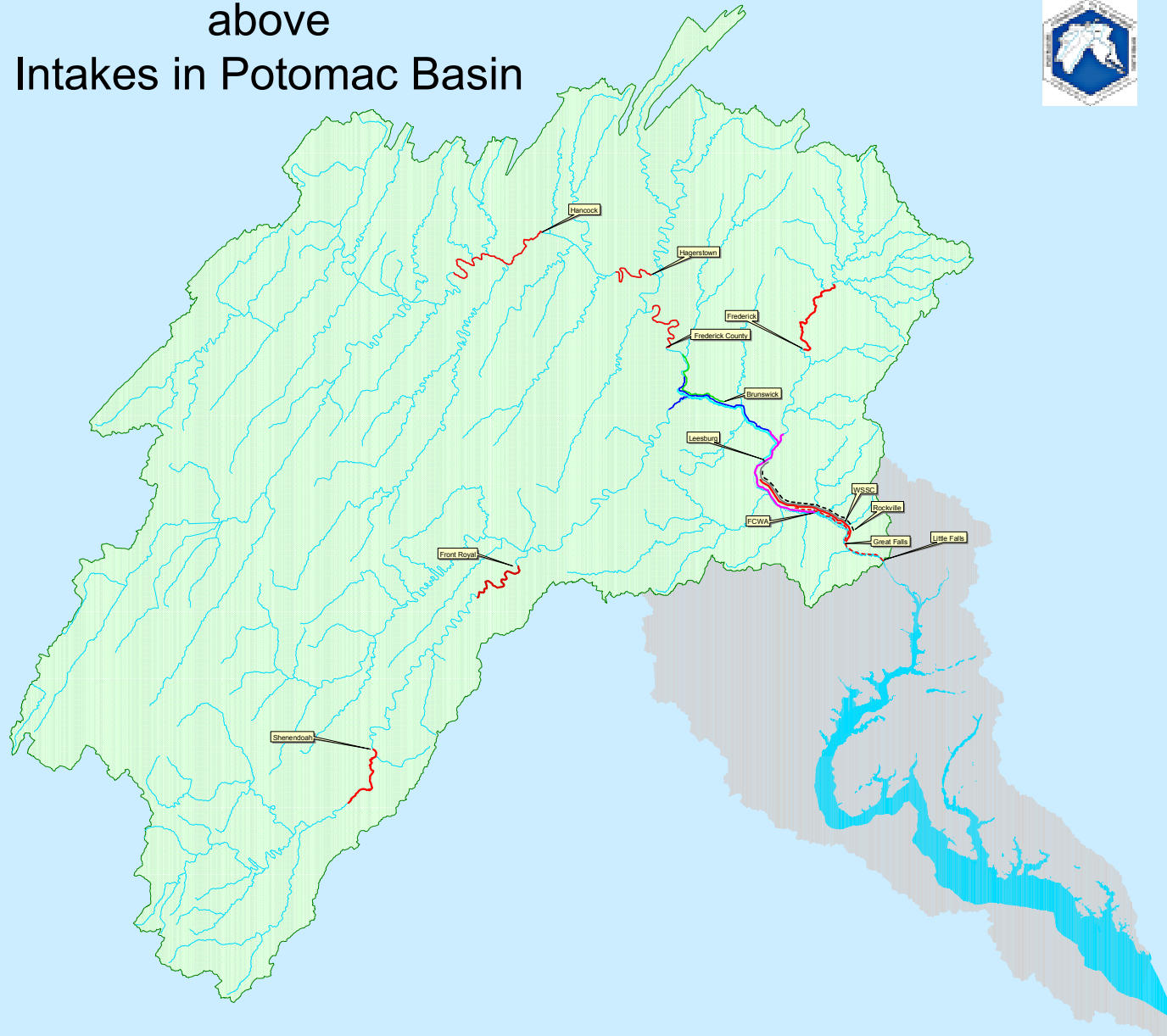
Leading and Trailing Edges at 168hrs







24hr Time of Travel above Intakes in Potomac Basin



Time of Travel Zones for the Potomac River above the WAD Intakes

