



**Department of the Environment**

---

# Maryland's Water Quality Standards for “P” designated waters





# Focus for Today

---

- Maryland's Designated Uses
- Criteria to protect those uses
- Antidegradation Policy





# MD's Designated Uses

---

- Use I: Water Contact Recreation, and Protection of Non-tidal Warmwater Aquatic Life
- Use II: Support of Estuarine and Marine Aquatic Life and Shellfish Harvesting
- Use III: Non-tidal Cold Water
- Use IV: Recreational Trout Waters





# MD's Designated Uses

---

**P= Public Water Supply**

**–Use I-P**

**–Use II-P**

**–Use III-P**

**–Use IV-P**





# MD's Designated Uses

---

## R. Sub-Basin 02-14-10: North Branch Potomac River Area.

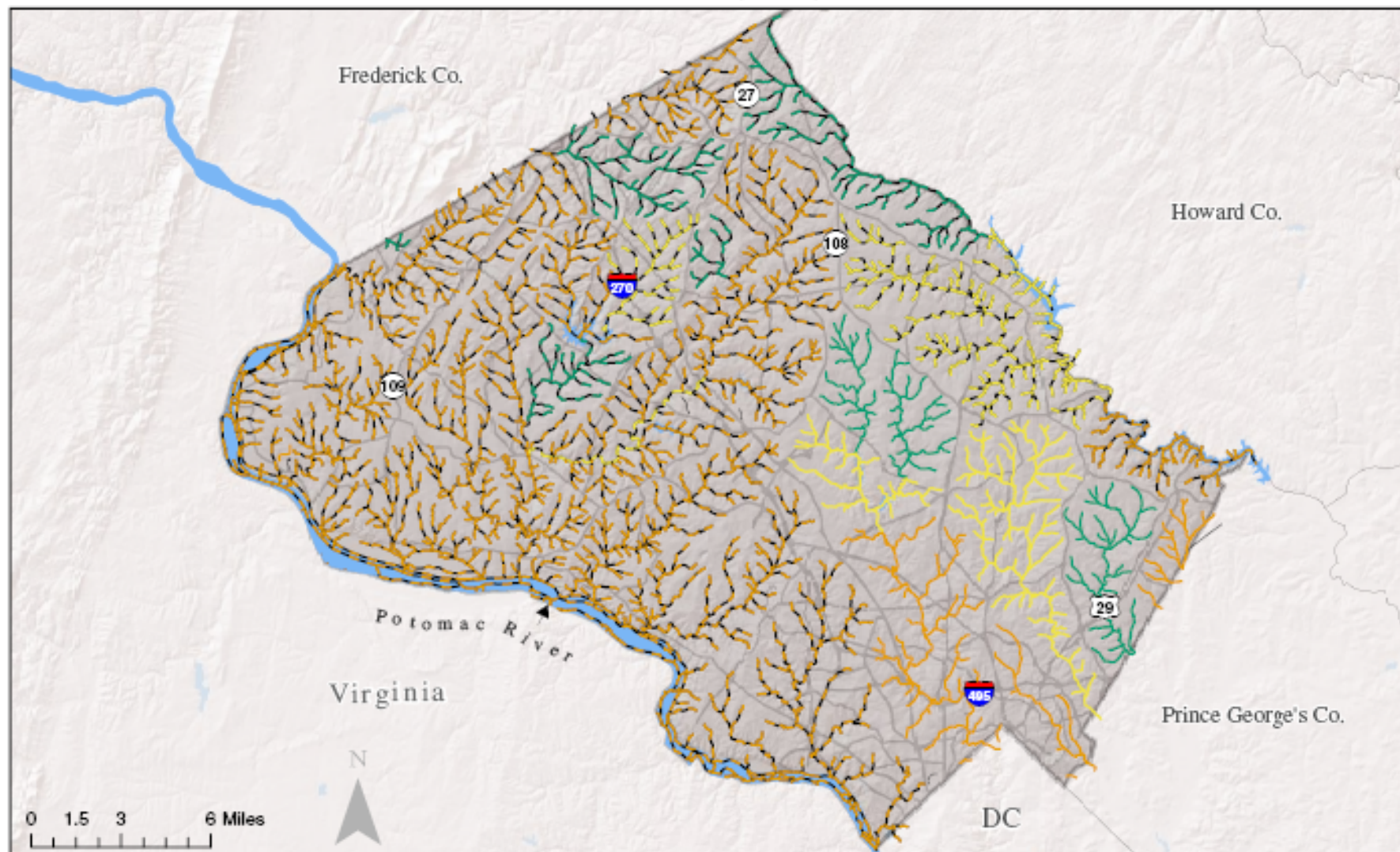
### (1) Use I-P:

- (a) North Branch Potomac River mainstem      352.3/621.1  
From the confluence of the North and South Branches of  
the Potomac River to the MD/WV State line
- (b) Mill Run and its tributaries in Allegany County  
272.2/625.8 From confluence with N. Branch (near  
Rawlings and Rawlings Heights)
- (c) An unnamed tributary near Pinto      281.7/636.5  
Confluence of the unnamed tributary with the North  
Branch of the Potomac River



# Stream Segment Use Designations in Montgomery County

[Code of MD Regulations (COMAR) 26.08.02.08]



Martin O'Malley, Governor  
 Anthony G. Brown, Lt. Governor  
 Shari T. Wilson, Secretary  
 Robert M. Summers, Deputy Secretary

## Designated Uses

I — I-P — II — II-P — III — III-P — IV — IV-P

The Maryland stream segment designations depicted are approximate representations.  
 See COMAR 26.08.02.08 for more information.



Maryland Department of the Environment  
 Science Services Administration  
 Montgomery Park Business Center  
 1800 Washington Boulevard  
 Baltimore, Maryland 21230-1718

Date Map Prepared: July 1, 2010



# WQ Criteria

---

## Specific to “P” designated waters

- Prior to April 2010, no significant “P” specific criteria
- Implementation/protection via other MDE Programs:
  - NPDES permits – Ed Stone
  - SDWA Implementation Division – Nancy Reilman
  - Sourcewater Protection Div – John Grace





# WQ Criteria

---

## 2010- Specific to “P” designated waters

- H. Criteria for Public Water Supply Reservoirs. The following criteria apply in freshwater reservoirs designated Use I-P, III-P or IV-P:
  - (1) The arithmetic mean of a representative number of samples of chlorophyll a concentrations, measured during the growing season (May 1 to September 30) as a 30-day moving average may not exceed 10 micrograms per liter; and
  - (2) The 90th-percentile of measurements taken during the growing season may not exceed 30 micrograms per liter.







# WQ Criteria

## 2010- Toxics Criteria

Substance	Aquatic Life ( $\mu\text{g/L}$ )						Human Health for Consumption of:		
	Fresh Water		Estuarine Water		Salt Water		Drink ing Water + Organ ism ( $\mu\text{g/L}$ )	Organism Only ( $\mu\text{g/L}$ )	Drinking Water MCL (mg/L)
	Acute	Chronic	Acute	Chronic	Acute	Chronic			
Aluminum	750	87							0.05-0.2
Antimony							5.6	640	0.006
Arsenic <sup>1</sup>	340	150			69	36	0.18	1.4 <sup>a</sup>	0.010





# Antidegradation Policy

---

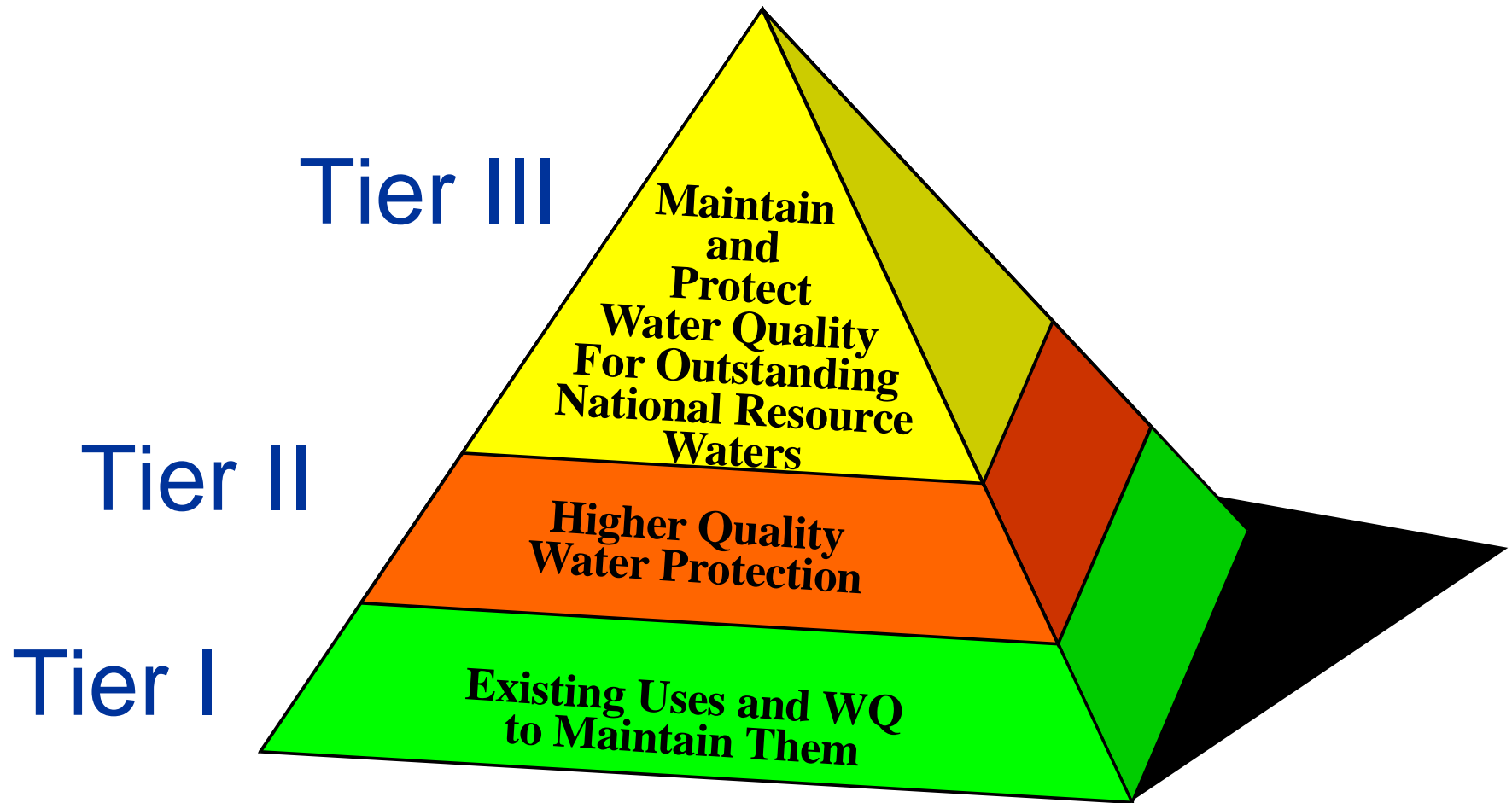
It's just like it sounds...

...for the protection of water quality  
and uses.





# Antidegradation - 3 tiers





---

**Maryland Department of the Environment Science  
Services Administration –  
Environmental Assessment and Standards  
Program**

**John Backus – [jbackus@mde.state.md.us](mailto:jbackus@mde.state.md.us) 410-537-3965**

**Adam Rettig – [arettig@mde.state.md.us](mailto:arettig@mde.state.md.us) – 410-537-3515**

