

Tree Canopy Trends in the Potomac Watershed

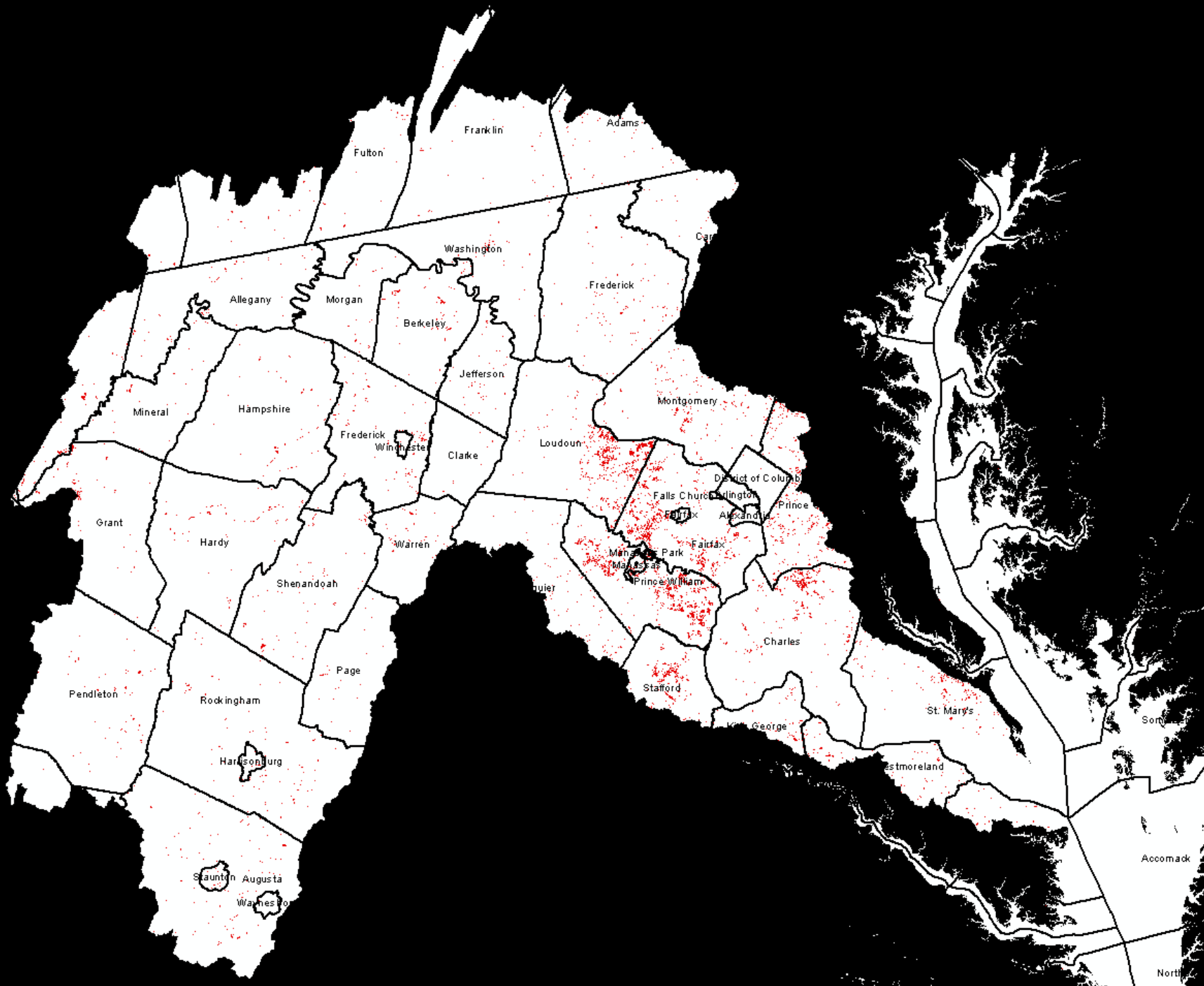
Peter Claggett

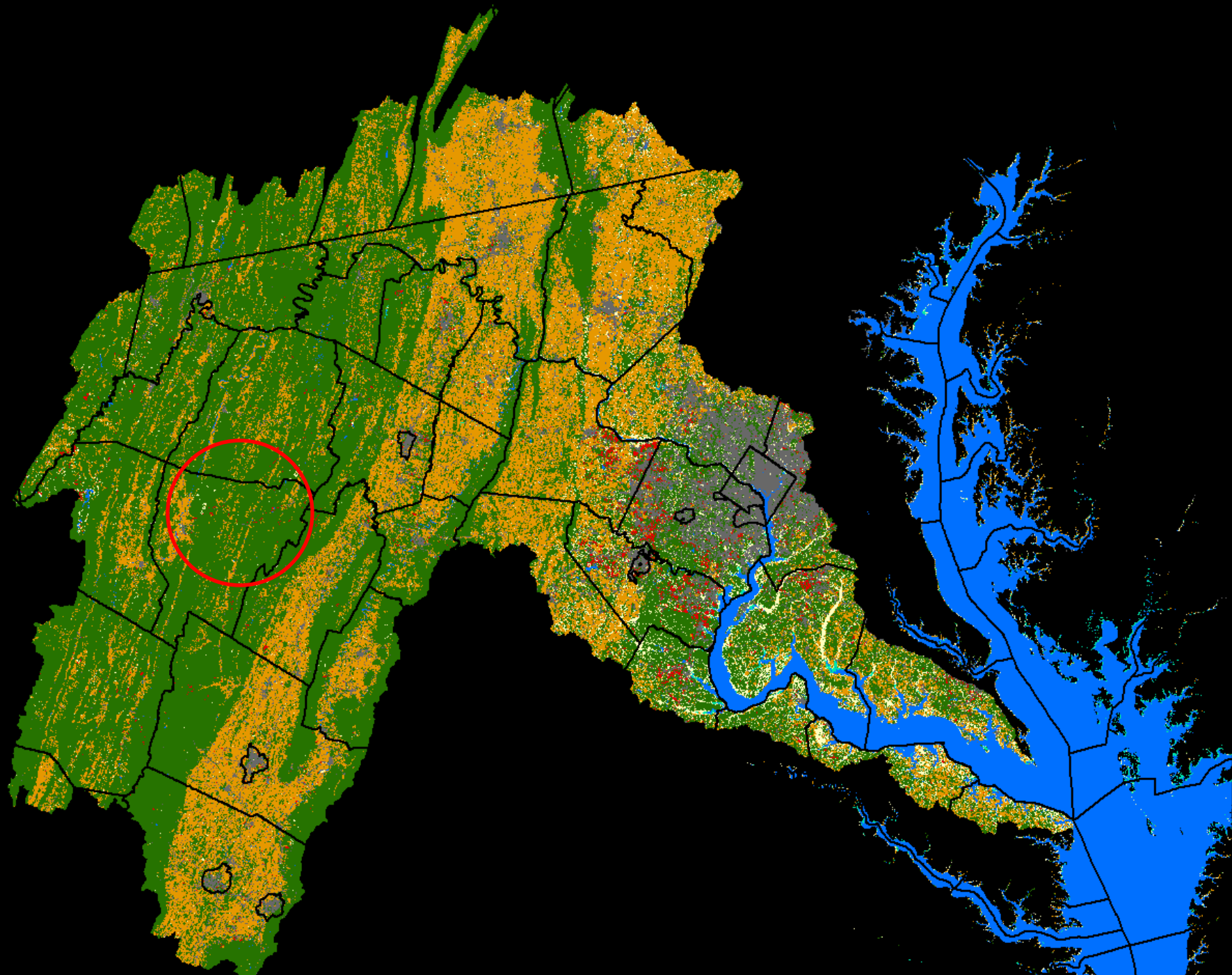
**Potomac River Basin Drinking Water Source Protection Partnership
Interstate Commission on the Potomac River Basin
May 15, 2013**

Potomac Land Use/ Cover Trends (1984 – 2006)

- Tree canopy declined 1.6% (136 mi²).
- Tree canopy covered 60.4% of the Potomac watershed in 1984 and covered 59.4% in 2006.
- Urban land cover increased 16.6% (195 mi²).
- Residential housing increased 45%.
- Urban land use increased 38.1% (568 mi²)*.
- Decline in tree canopy mostly associated with urban development.

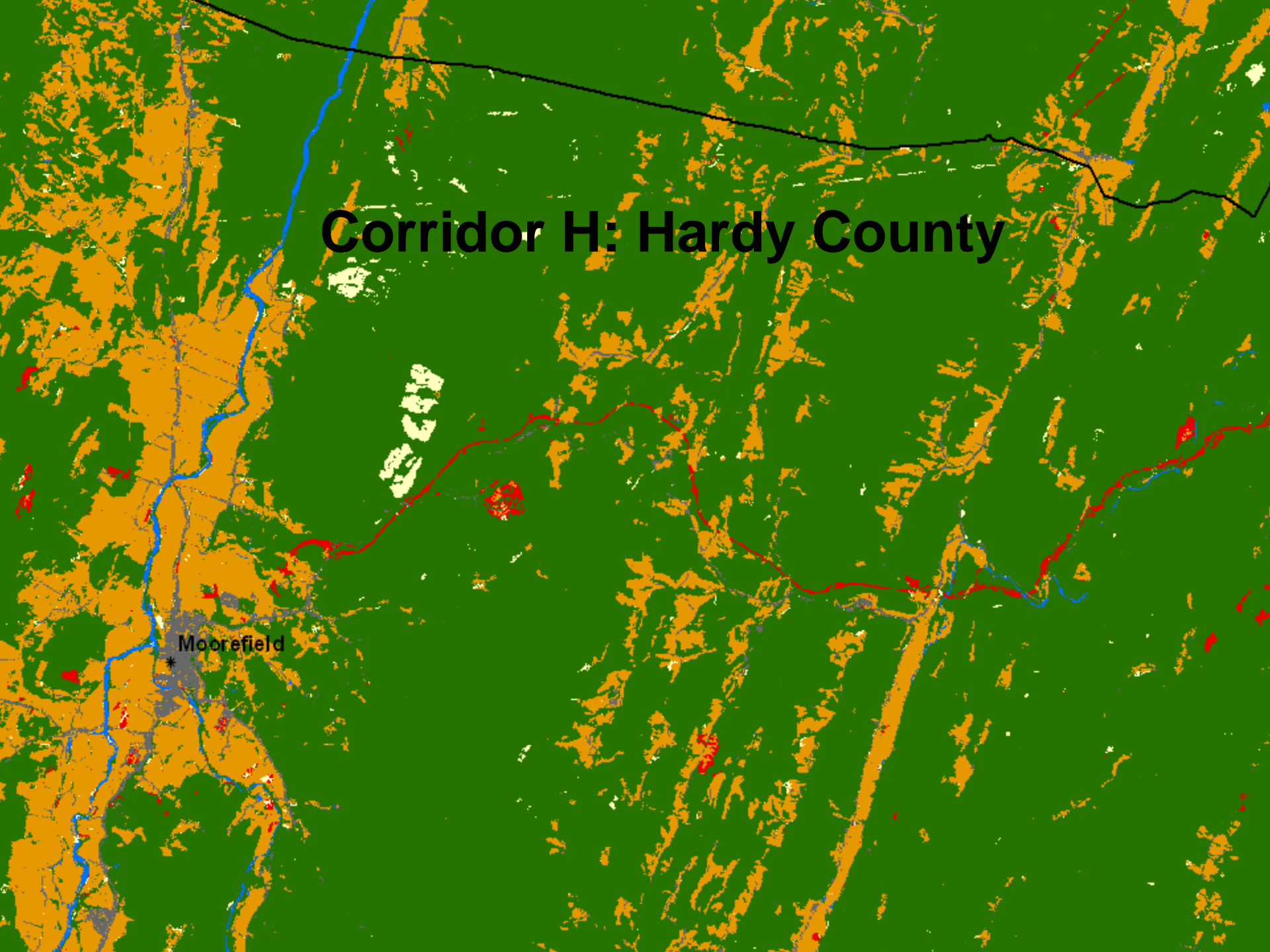
* According to the USDA's NRI, developed land uses increased between 835 – 1,338 mi² from 1982 – 2007.

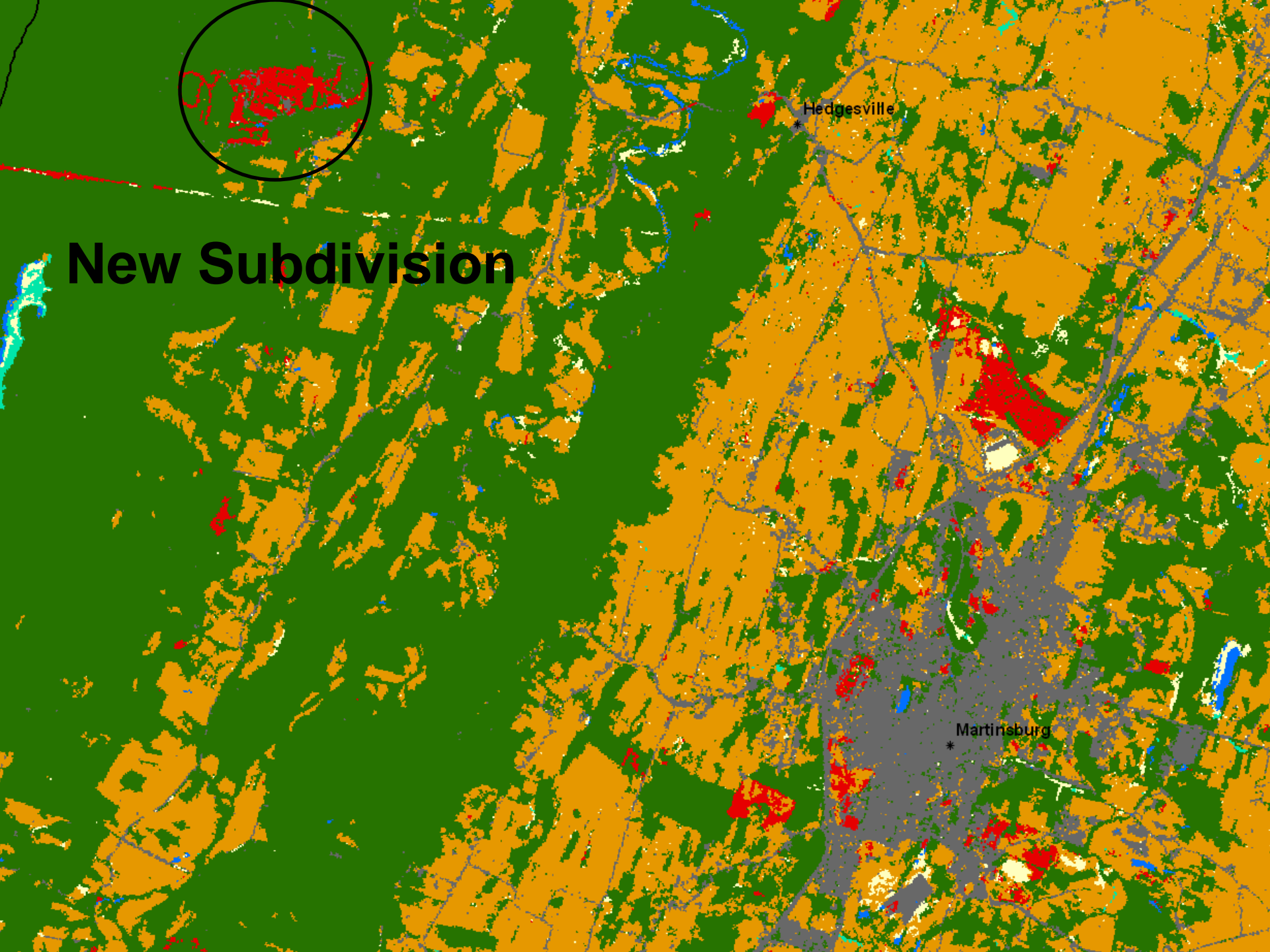




Corridor H: Hardy County

Moorefield



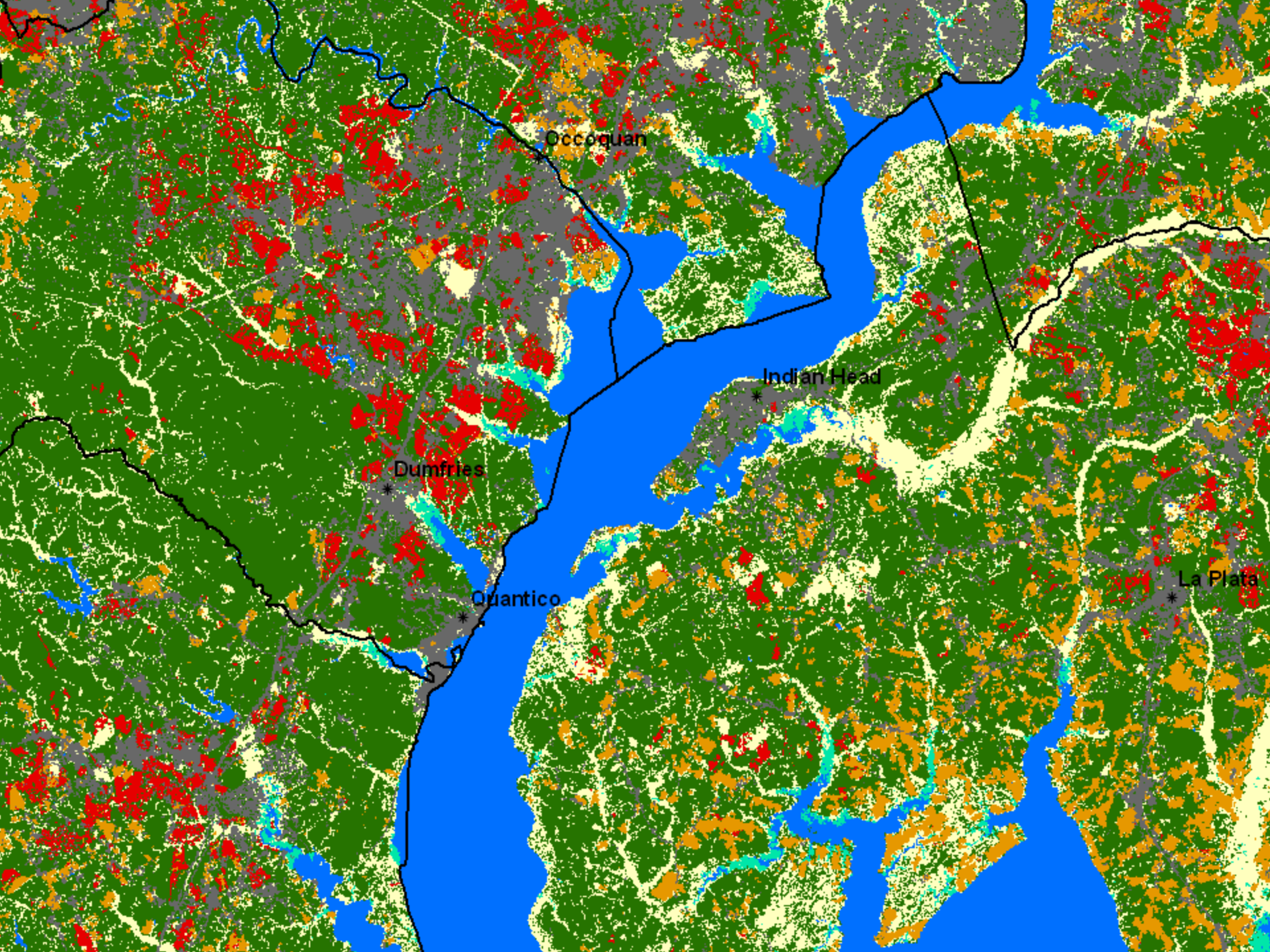


New Subdivision

Hedgesville

Martinsburg





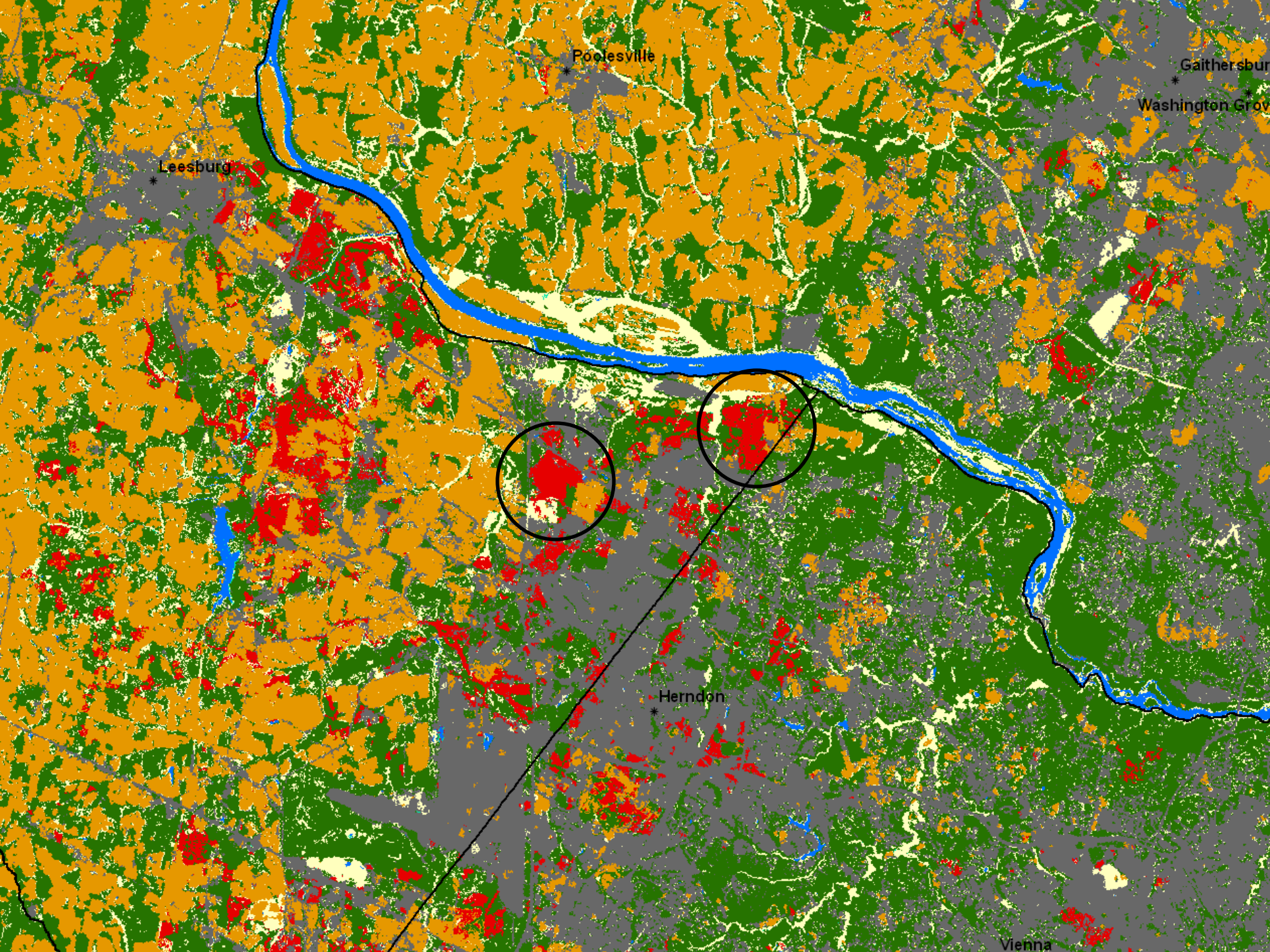
Occoquan

Indian Head

Dumfries

Quantico

La Plata



Poolesville

Gaithersburg

Washington Grove

Leesburg

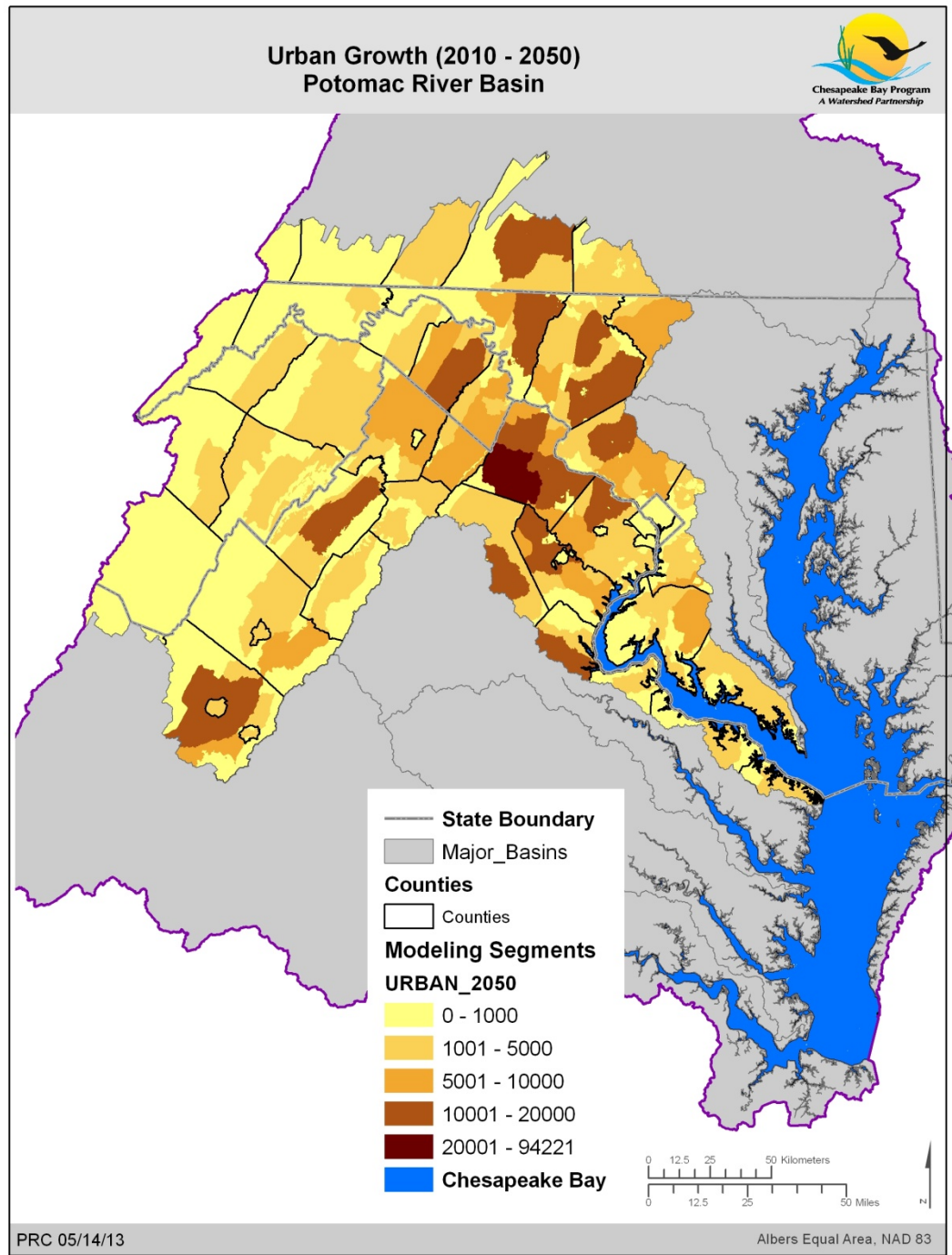
Herndon

Vienna

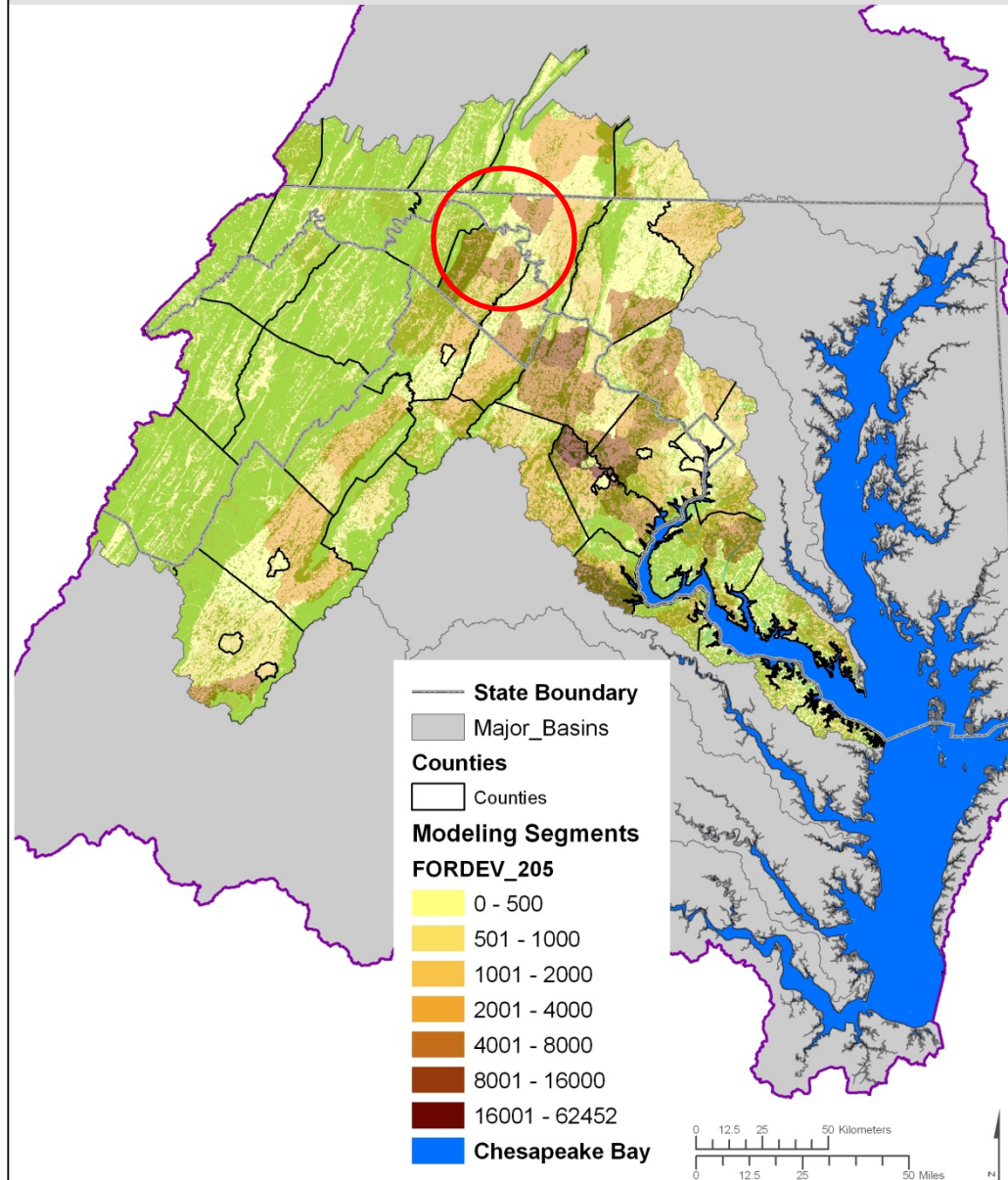


Potential Future Conditions (2006 - 2050)

- Urban land use could increase by 50% (1,100 mi²)
- Forest cover could decrease by 6% (528 mi²)



Forest Loss (2010 - 2050) Potomac River Basin



Cacapon Institute



Protecting rivers and
watersheds since 1985

U.S. Census

- 2000 Urban Core
- 2010 Urban Core Growth
- 2000 Urban Areas
- 2010 Urban Areas Growth



According to U.S. Census Bureau data, the Hagerstown Urban Area (MD-PA-WV) grew 74% in size. It grew by 52% in population. Of the 33 "urban areas" defined by the U.S. Census Bureau in the Chesapeake Bay watershed, Hagerstown was #1 in percentage of growth in land cover area. Nationally, from a total of 498 urban areas, it was ranked 33rd in population growth by percent.

More information:
Frank Rodgers
frodgers@cacaponinstitute.org
304-856-1385
P.O. Box 68, High View, WV

Hagerstown Urban Area
MD-PA-WV

