



United States Department of Agriculture



Virginia

Natural
Resources
Conservation
Service



“Partnering in the Potomac” Virginia’s Approach to Source Water Protection

August 7, 2019 | Stacey Bradshaw

Natural
Resources
Conservation
Service

nrcs.usda.gov/

Virginia's Efforts In Resource Protection

- **Conservation Systems (2009-2016):**
 - Installed on more than 1.2 Million Acres in ChesBay alone
 - \$291 million in financial assistance to VA Farmers/Forest landowners
- **Main Focus:**
 - Controlling Nutrients on Livestock Operations
 - Controlling Manure Applications on Cropland
- **Target Watersheds:**
 - High Nutrient and Sediment Pollution Potential





“Water quality managers must now look to the entire watershed not just isolated sources of pollution-to nonpoint sources not just point sources.” Moreover, “water quality managers now find themselves ‘playing without the ball’ at least with respect to diffuse, nonpoint sources which are mostly within the province of other agencies, local governments or private sector entities or individuals. These managers must coordinate their objectives with those of other players, throughout the watershed.”

~G. Tracy Mehan III

**Executive Director, Government Affairs
American Water Works Association**

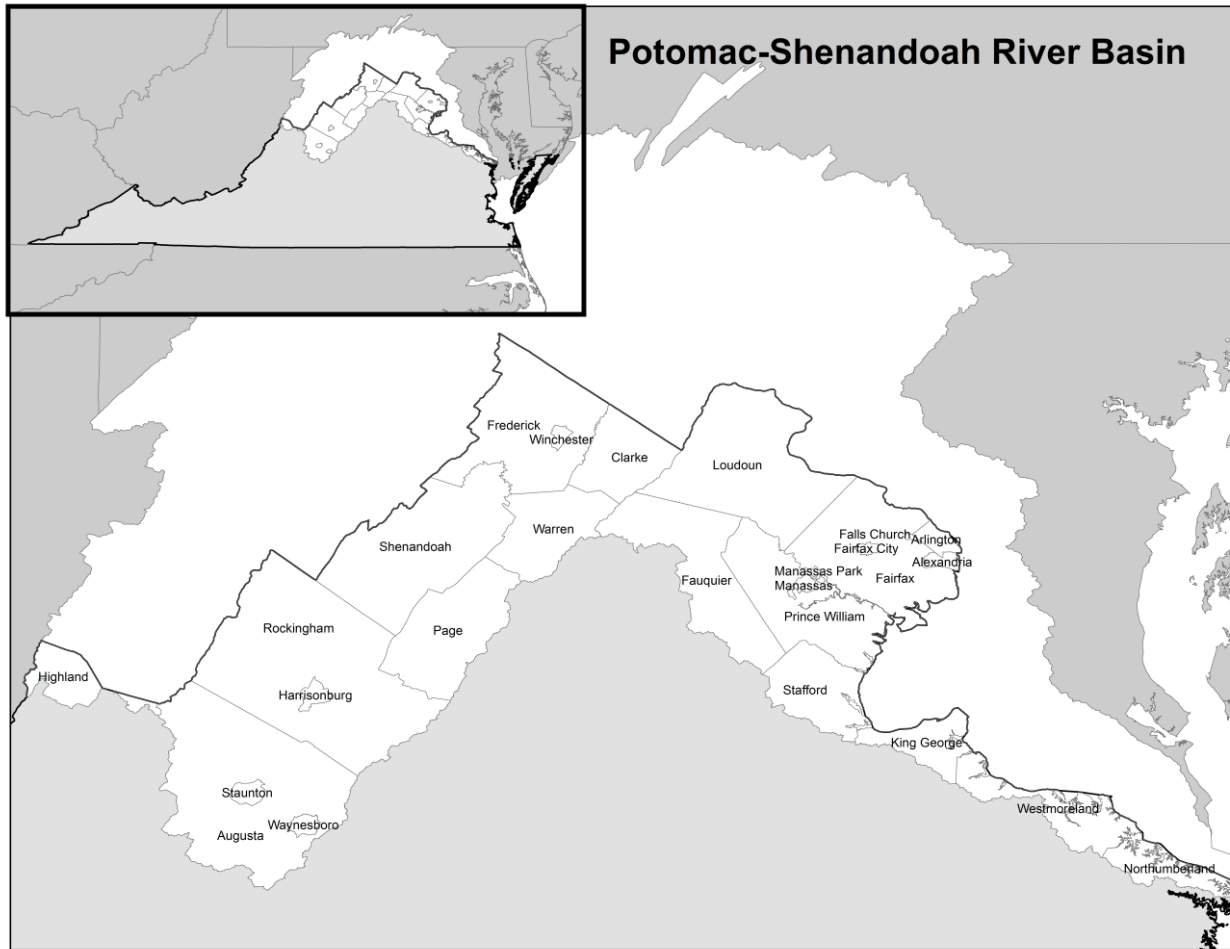


**Natural
Resources
Conservation
Service**

nrcs.usda.gov/



Potomac River – Virginia's Portion



Potomac River Basin Statistics

5,681 Square Miles

Counties:

Arlington
Augusta
Clarke
Fairfax
Fauquier
Frederick
Highland
King George
Loudoun
Northumberland
Page
Prince William
Rockingham
Shenandoah
Stafford
Warren
Westmoreland

Land Use:

40% Forested
33% Cropland/Pasture

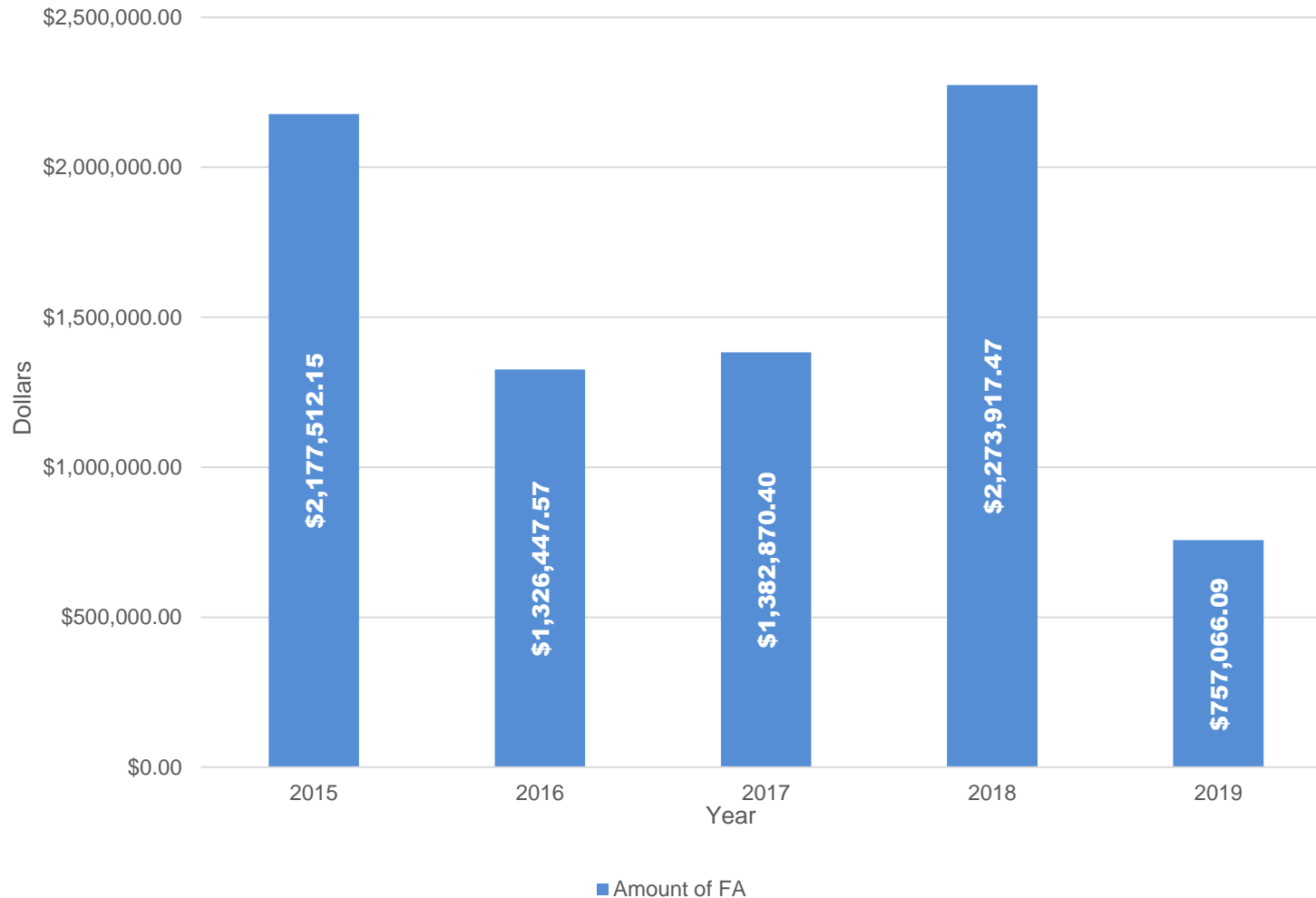
Natural
Resources
Conservation
Service



Map courtesy of VA Department of Environmental Quality

nrcs.usda.gov/

Potomac - NWQI Core Practices

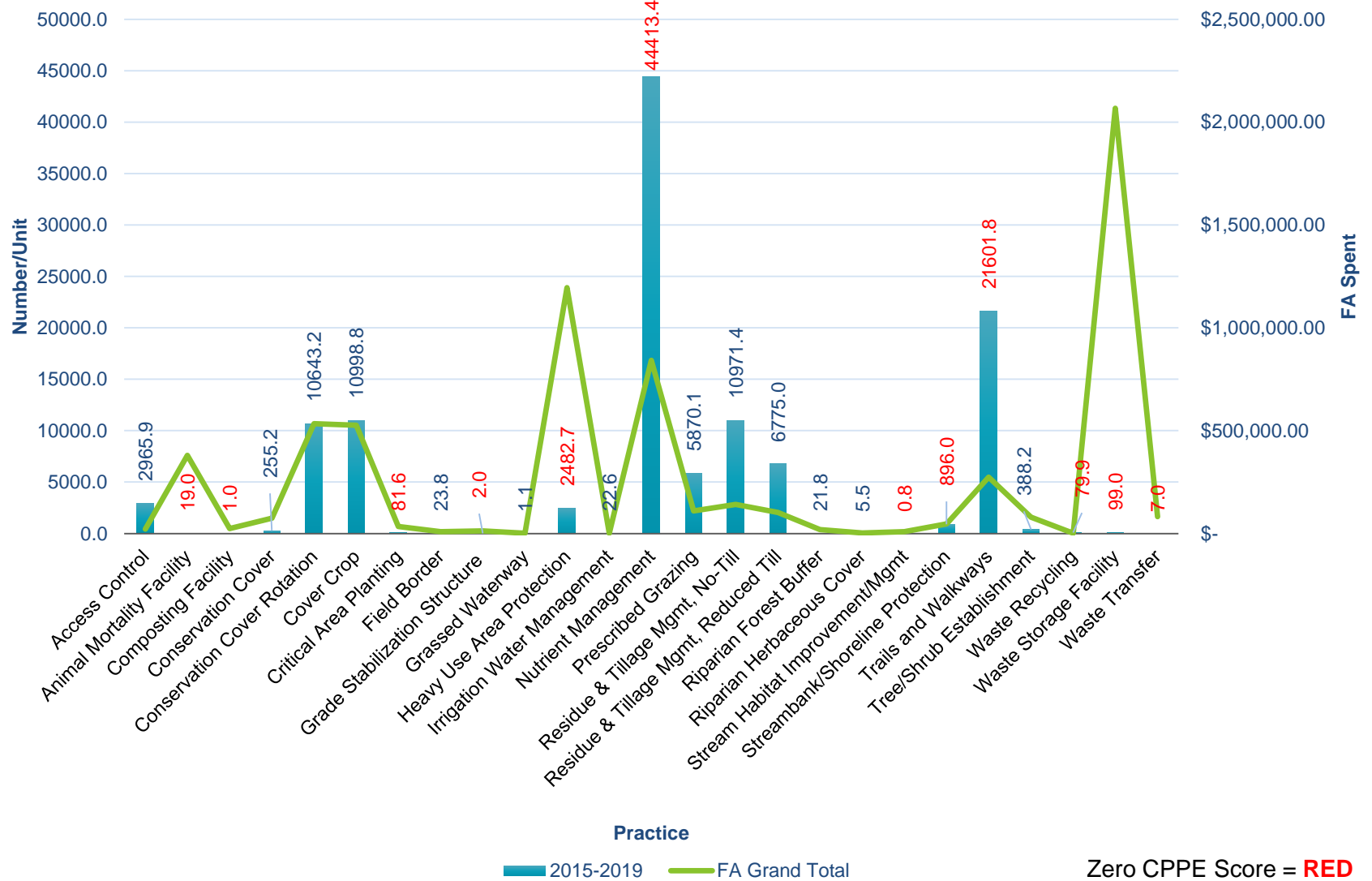


2014 Farm Bill Data – CSP, EQIP, RCPP (2014 – 2018)

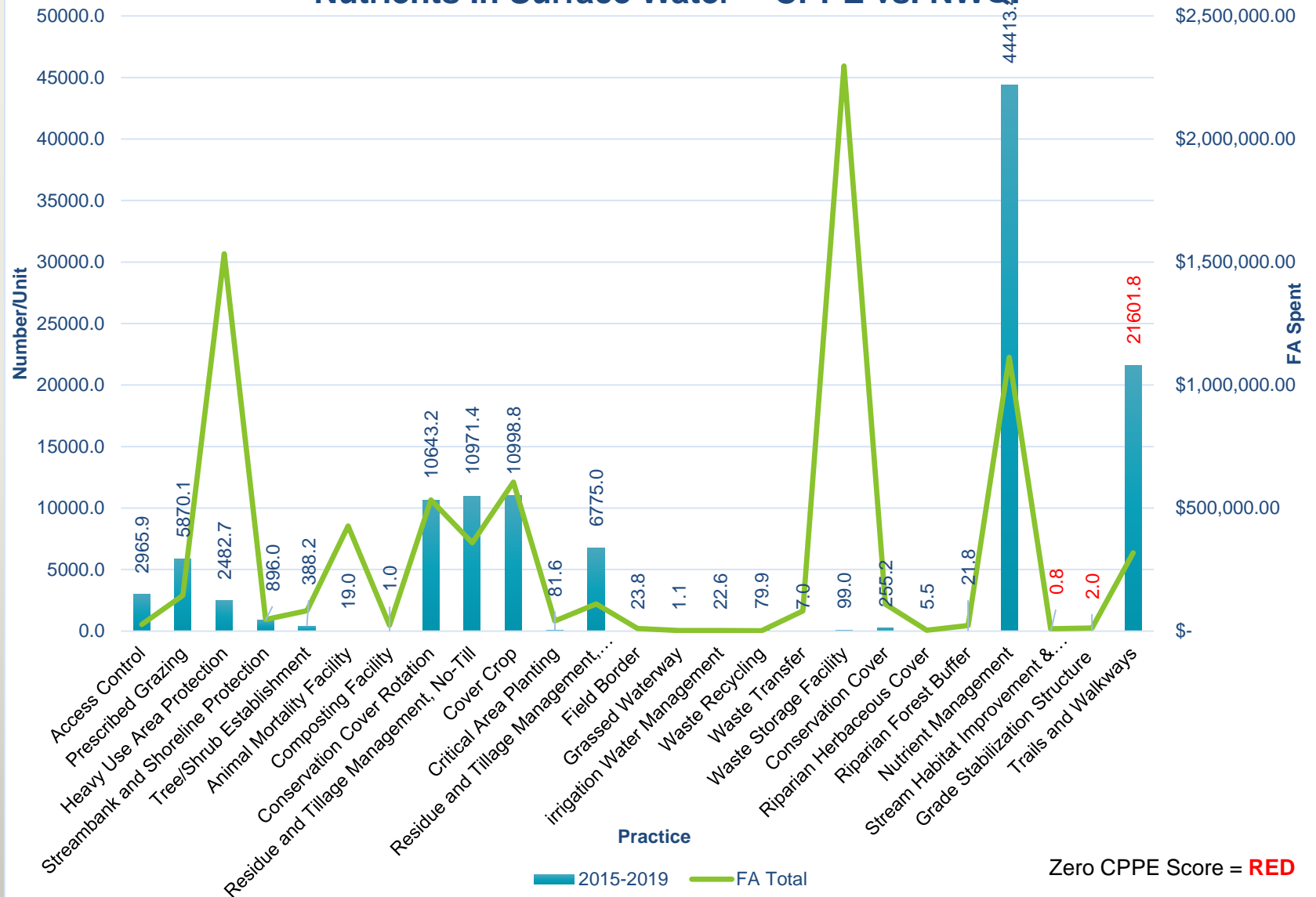
Field Office	FA Obligated	Contracts Written	Contract Acres
FREDERICKSBURG SERVICE CENTER	\$2,509,259.17	72	13,985.98
HARRISONBURG SERVICE CENTER	\$10,512,184.71	265	21,220.38
STRASBURG SERVICE CENTER	\$2,802,088.40	96	12,885.60
VERONA SERVICE CENTER	\$4,509,920.24	141	16,868.66
WARRENTON SERVICE CENTER	\$1,998,916.37	60	8,191.38
WARSAW SERVICE CENTER	\$8,691,921.45	271	89,288.90



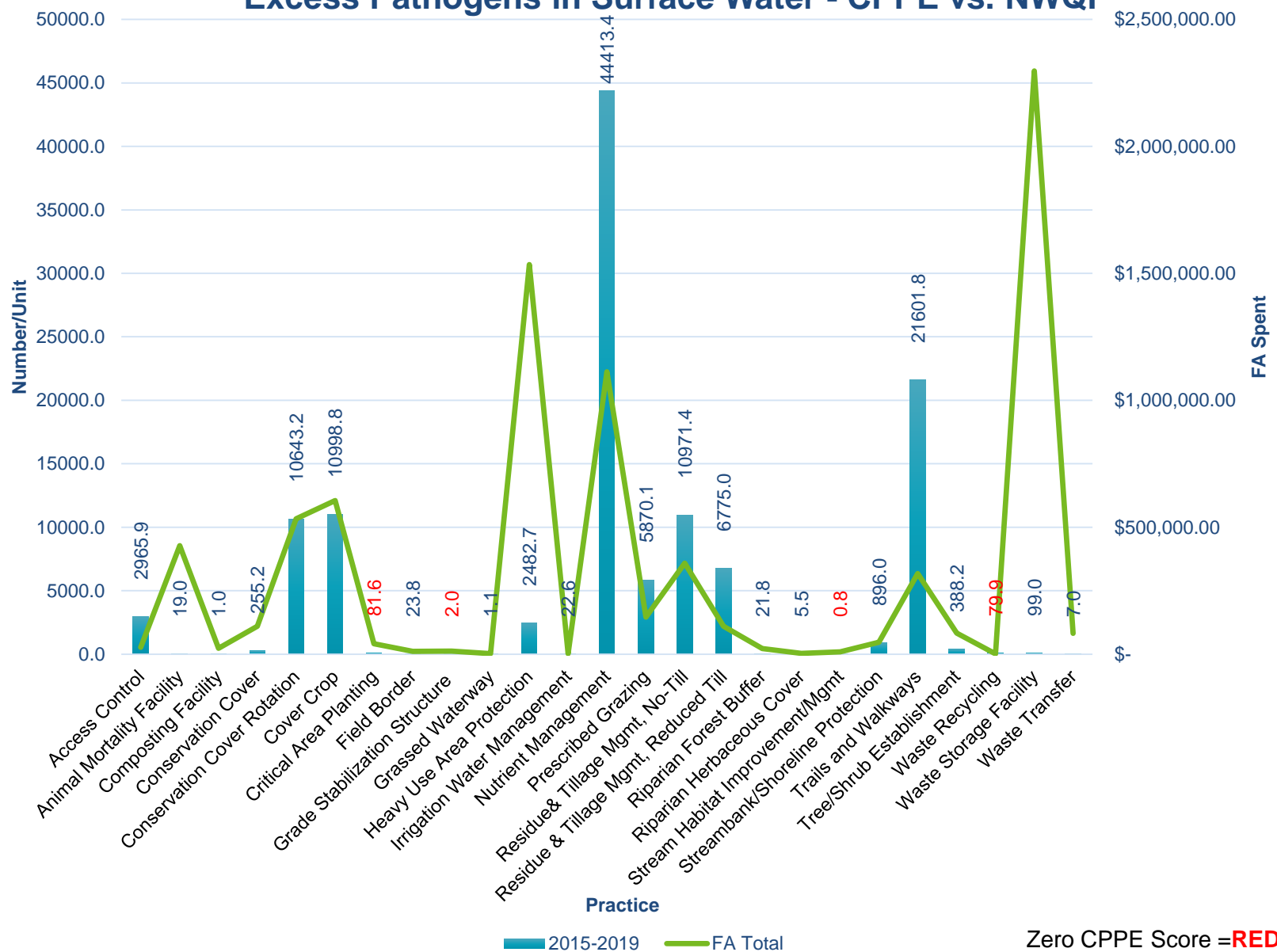
Pesticide Transport - CPPE vs. NWQI



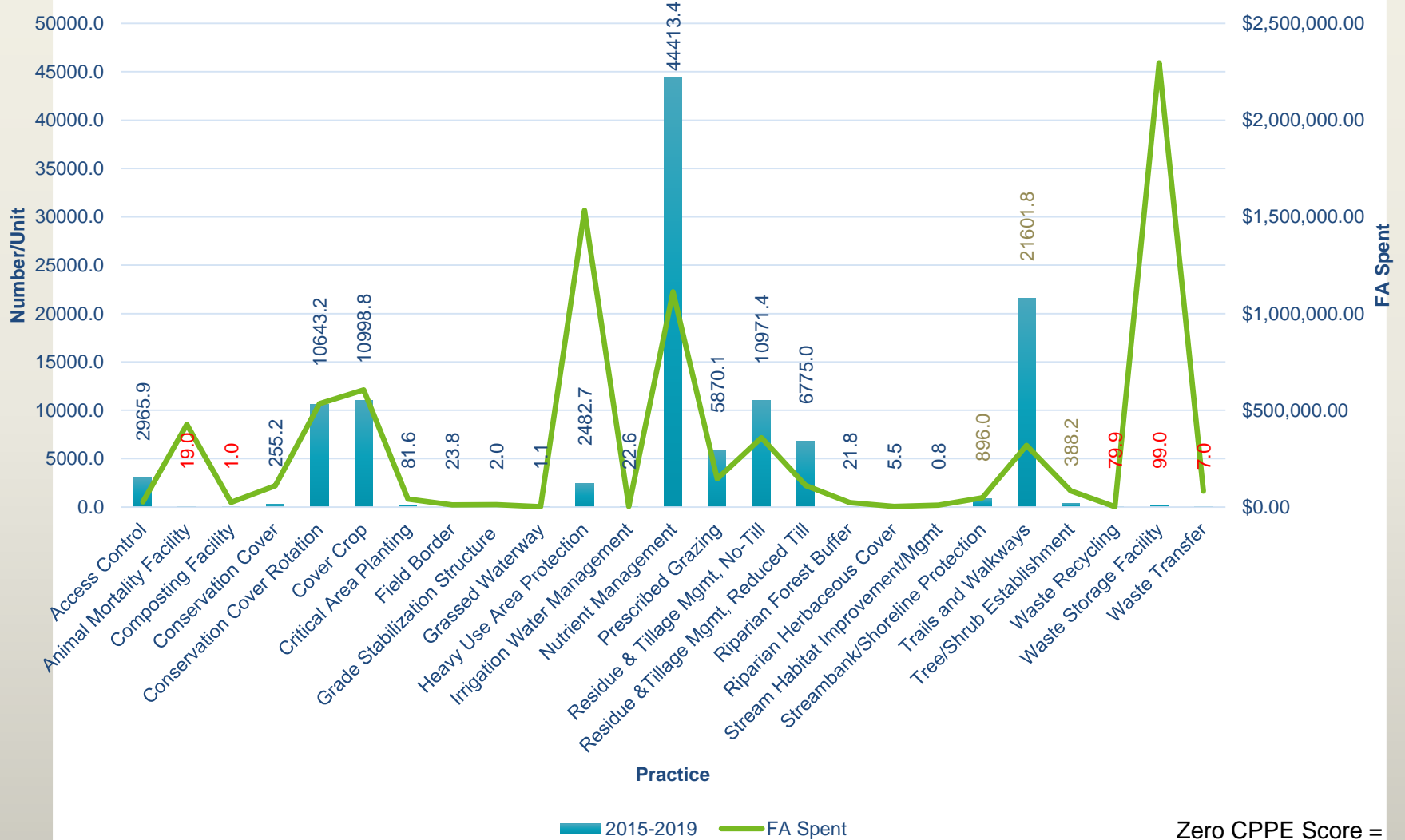
Nutrients In Surface Water -- CPPE vs. NWQI



Excess Pathogens in Surface Water - CPPE vs. NWQI



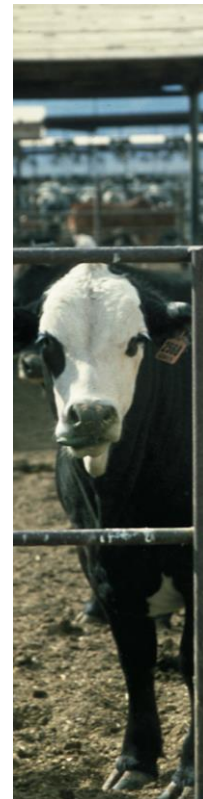
Excess Sediment in Surface Water -- CPPE vs. NWQI



Zero CPPE Score =

Potomac River Basin - Fence

County	Feet Fence Installed	FA Spent
AUGUSTA	126,601	\$ 226,638.52
CLARKE	47,203	\$ 92,870.54
FAUQUIER	9,075	\$ 18,658.06
FREDERICK	35,970	\$ 68,807.72
HIGHLAND	29,441	\$ 55,757.19
KING GEORGE	39,341.3	\$ 83,114.11
LOUDOUN	4,937	\$ 7,890.78
PAGE	31,987	\$ 57,249.60
ROCKINGHAM	262,557	\$ 439,733.00
SHENANDOAH	55,166	\$ 99,220.49
STAFFORD	31,177	\$ 57,206.38
WARREN	10,782	\$ 22,296.18
WESTMORELAND	1,800	\$ 2,736.00
GRAND TOTALS	686,037.3 feet	\$1,232,178.55



Natural
Resources
Conservation
Service

nrcs.usda.gov/



Virginia's Strategy for the Future

Program Characteristics	NWQI	RCPP
Staffing Opportunities	No	Yes
Funding Authority	EQIP, only	All
Funding Amounts (National, annually)	\$30 Million	\$300 Million
Competition watershed with set aside \$	Yes	Yes



RCPP FA Spent in Potomac River Basin NWQI Core Practices (2015-2019)





Questions:

Stacey Bradshaw

Stacey.Bradshaw@usda.gov
804-287-1673

