



Addressing emerging challenges and ensuring a reliable water supply for the future requires vigilance and collaboration.

WE ARE

A partnership of water suppliers and government agencies working to advance our shared mission

WE OFFER

- **Quarterly meetings to educate members about research, regulatory affairs, and emerging issues**
- **Opportunities to share best practices for improving water quality and minimizing operational costs**
- **Focused work groups:**
 - **Agricultural Issues**
 - **Early Warning & Emergency Response**
 - **Reaching Out**
 - **Urban & Industrial Issues**
 - **Contaminants of Emerging Concern**
 - **Water Quality**

PARTNERSHIP COORDINATOR

Interstate Commission on the Potomac River Basin
Christina C. Davis, PhD, PE
partnership@icprb.org | potomacdwspp.org

**AMPLIFYING REGIONAL SOURCE WATER
PROTECTION EFFORTS SINCE 2005**



134 Wastewater Treatment Plants



Total population 6.7 million²

3,800 million gallons withdrawn per day³

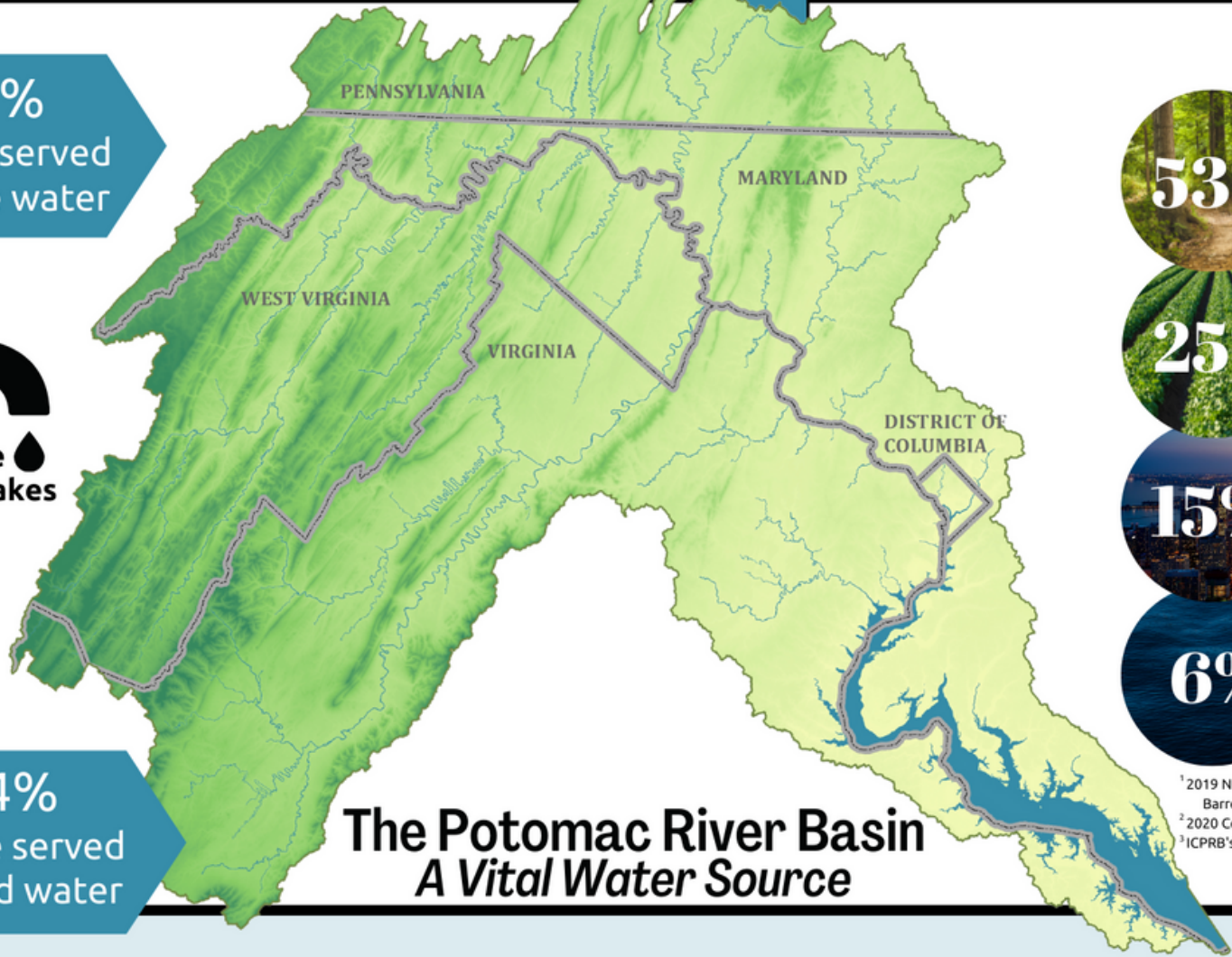
Total basin area: 14,670 sq miles

86.6%
of people served
by surface water



77 Surface Water Intakes

13.4%
of people served
by ground water



The Potomac River Basin A Vital Water Source



¹ 2019 NLCD data; 1% Other: Barren, 0.2%; Herbaceous, 0.7%
² 2020 Census
³ ICPRB's Reported Water Use Brochure

