

EPA On-Scene
Coordinator

Responsibilities
and Coordination

June 28, 2022

EPA R3 National Capital Region

Topics

- ◇ Authorities
- ◇ On-Scene Coordinator Role
- ◇ R3 Area Planning Structure
- ◇ EPA Response Resources
- ◇ Common EPA Response Roles
- ◇ Q&A

FOSC Response Authorities

- ◆ National Contingency Plan (NCP)
- ◆ Delegations
- ◆ Oil Pollution Act 1990 (OPA90)

History of the NCP

- ◆ The NCP was enacted in 1968 by President Johnson.
- ◆ The NCP designates the OSC as the lead Federal official at spills of oil and/or hazardous substances.
- ◆ Executive Orders (12580, 12777, and others) have delegated to the OSCs the power to respond, coordinate, and direct all private, local, and state emergency responses and removals.

NCP

- **§300.120** - Establishes general responsibilities of federal On-Scene Coordinators.
- **§300.125(a)** - Requires notification of any discharge or release to the National Response Center through a toll-free telephone number. The National Response Center (NRC) acts as the central clearinghouse for all pollution incident reporting. **800-424-8802**
- **§300.135(a)** - Authorizes the pre-designated On-Scene Coordinator to direct all federal, state, and private response activities at the site of a discharge.
- **§300.135(d)** - Establishes the unified command structure for managing responses to discharges through coordinated personnel and resources of the federal government, the state government, and the responsible party.

NCP (con't)

- **§300.170** - Identifies the responsibilities for federal agencies that may be called upon during response planning and implementation to provide assistance in their respective areas of expertise consistent with the agencies' capabilities and authorities.
- **§300.175** - Lists the federal agencies that have duties associated with responding to releases.
- **§300.210** - Defines the objectives, authority, and scope of Federal Contingency Plans, including the National Contingency Plan (NCP), Regional Contingency Plans (RCPs), and Area Contingency Plans (ACPs).
- **§300.165** - Requires the On-Scene Coordinator to submit to the RRT or NRT a report on all removal actions taken at a site.

OPA 90

- OPA 90 was enacted to expand prevention and preparedness activities, improve response capabilities and ensure that responsible parties pay.



- OPA 90 established the Oil Spill Liability Trust Fund



OSC Authority Under OPA 90

- OSCs have the authority to direct Potentially Responsible Parties (PRP) in the event of an oil spill.
- OSCs can provide oversight for cleanup activities.



EPA/USCG Coordination



- For response purposes, the NCP divides the United States into inland and coastal zones, with EPA responsible for providing OSCs for the inland zone and USCG responsible for providing OSCs for the coastal zone.





REGIONAL RESPONSE TEAM

FEDERAL REGION III

Environmental
Protection Agency

U.S. Coast Guard

Department of
Agriculture

Department of
Commerce

Department of
Defense

Department of Energy

Department of
Health and Human
Services

Department of
Interior

MEMORANDUM OF AGREEMENT (MOA) BETWEEN U.S. ENVIRONMENTAL PROTECTION AGENCY - REGION III AND U.S. COAST GUARD - FIFTH DISTRICT

Purpose

The intent of this Memorandum between the United States Environmental Protection Agency (EPA), Region III and the United States Coast Guard (USCG), Fifth District is to delineate the Region III Inland and Coastal Zone geographical boundaries establishing responsibility for the On-Scene Coordinator (OSC) for pollution response, pursuant to the Clean Water Act, as amended, (CWA), 33 U.S.C. §§ 1251 - 1387; and the National Oil and Hazardous Substances Contingency Plan (NCP), 40 C.F.R. §§ 300.5 and 300.120.

Definitions

The following definitions will apply to this Memorandum of Agreement (MOA):

Vessel - Every description of watercraft or other artificial contrivance used, or capable of

Sector Baltimore

Starting at State Highway 13 at the VA/MD border; then west on the VA/MD border; then west along the west bank of the Potomac River where it meets U.S. Interstate 495 (American Legion Memorial Bridge); then east along U.S. Interstate 495 to the east bank of the Potomac River; then south along the east bank of the Potomac River to the Arlington Memorial Bridge; then east on the Arlington Memorial Bridge to Independence Avenue; then east on Independence Avenue to 15th Street SE; then north on 15th Street SE to Bladensburg Road; then north on Bladensburg Road to New York Avenue; then east on New York Avenue to State Highway 50 continuing east on State Highway 50 to U.S. Interstate 295; then south on U.S. Interstate 295 to the Suitland Parkway; then east along the Suitland Parkway to MD State Highway 5; then south along State Highway 5 to State Highway 231; then east along State Highway 231 to State Highway 2; then north along State Highway 2 to State Highway 178; then north along State Highway 178 to State Highway 3; then north along State Highway 3 to U.S. Interstate 695; then west along U.S. Interstate 695 around the city limits of Baltimore to U.S. Interstate 95; then east on U.S. Interstate 95 to the west bank of the Susquehanna River; then north along the west bank of the Susquehanna River to the Conowingo Dam; then east along the Conowingo Dam to the east bank of the Susquehanna River; then south along the east bank of the Susquehanna River to U.S. Interstate 95; then east along U.S. Interstate 95 to the MD/DE border; then south along the MD/DE border to the south bank of the Chesapeake & Delaware Canal to MD State Highway 213; then south along State Highway 213 to State Highway 50; then south along State Highway 50 to State Highway 13; then south along State Highway 13 to the VA/MD border.

Washington DC - Potomac and Anacostia Rivers



0 0.5 1 1.5 2 Miles



US Coast Guard Boundary - Map 5 of 15 - January 2004

WASHINGTON DC

US EPA Response Zone

US EPA Response Zone

USCG Response Zone

VIRGINIA

MARYLAND

To report discharges of oil and releases of hazardous substances, call:



National Response Center

1-800-424-8802

Or EPA Region 3 at (215) 814-3255
www.epa.gov/region3/emergenc.htm



Legend

Vol.	Jurisdiction
I	EPA Region III Designated FOSC
II	Washington DC Extended
III	Southeast PA/DE
IV	Northeast PA
V	Southcentral PA
VI	Northcentral PA
VII	Southwest PA/Wheeling WV
VIII	Northwest PA
IX	Huntington/Central WV
X	Shenandoah Valley
XI	Upper Chesapeake
XII	Southeast VA
XIII	Southcentral VA
XIV	Northcentral WV
XV	Southwest VA/WV

States
Counties

0 12.5 25 50 Miles



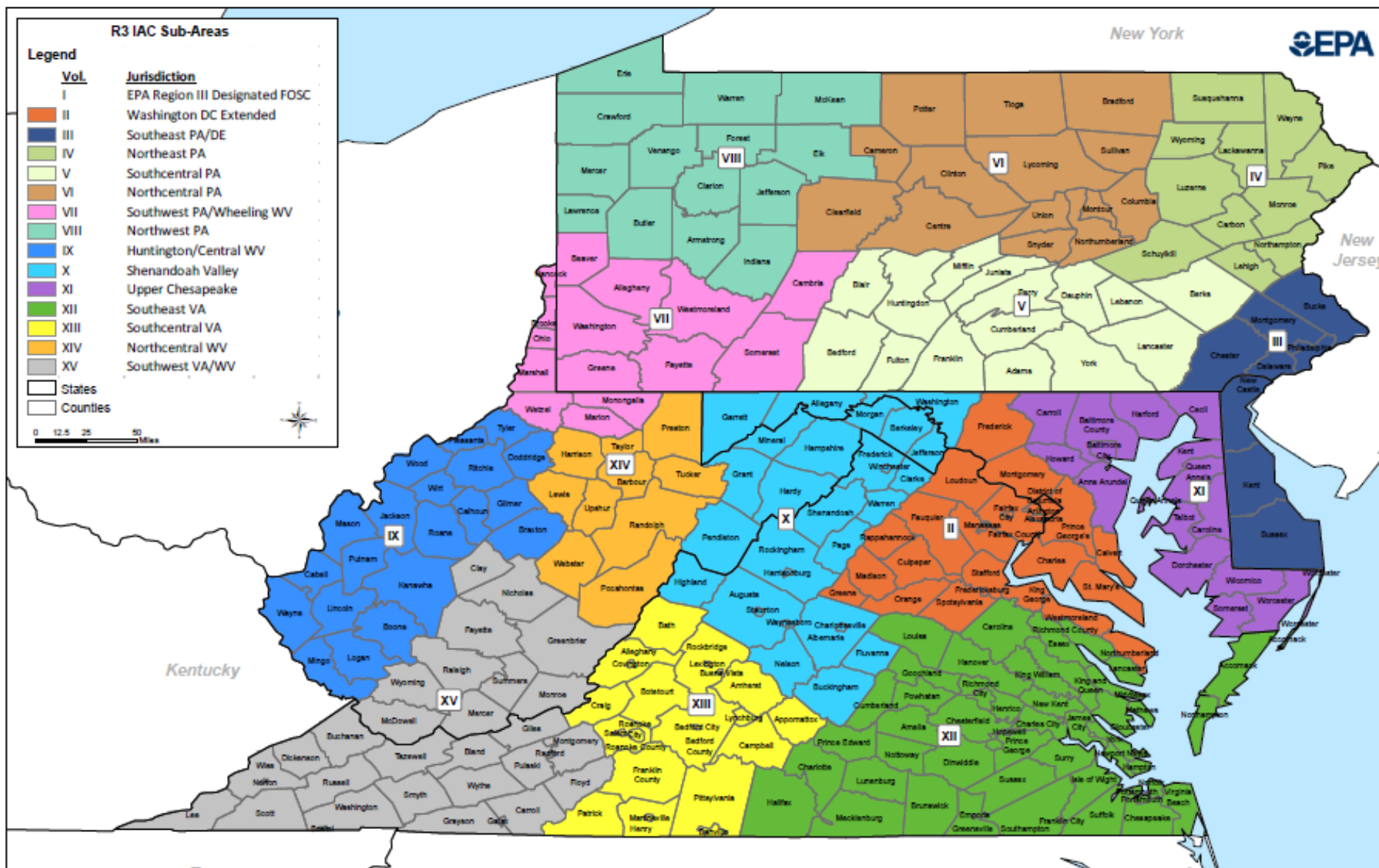
R3 IAC Sub-Areas

New York



New Jersey

Kentucky



EPA/USCG Special Teams

- ◆ Environmental Response Team (ERT)
- ◆ CBRN – Consequence Management Advisory Team (CMAT)
- ◆ Radiation Emergency Response Team (RERT)
- ◆ National Criminal Enforcement Response Team (NCERT)
- ◆ USCG National Strike Force



OSC Resources - Contractor Support

- **START** - Superfund Technical Assessment and Response Team (START) provides site documentation, ERRS oversight, health and safety, air monitoring, multi-media sampling, technical support, and other services.

Train Derailment



Tire Fire



Methamphetamine Lab Haz-Cat



Examples of EPA Response Roles

- ◆ Assist with containment and control spread of contamination utilizing EPA Emergency Response Contractors and Special Teams
- ◆ Assess extent and magnitude of contamination oil or HAZMAT
- ◆ Assist local health departments in assessing public health risk
- ◆ Assist FBI/CID with forensic sampling
- ◆ Assist USACE with disposal of contaminated debris
- ◆ Assist OSHA in safeguarding safety of responders
- ◆ Identify/implement decontamination options
- ◆ Assist HHS and local component in determination of when an area is safe to reoccupy
- ◆ Support of SS on NSSEs
- ◆ Support of Law Enforcement Investigations EPA CID, MPD, FBI, CBP
- ◆ Mercury Spills
- ◆ Oil Spills in support of USCG or DOEE
- ◆ Train Derailments when oil or hazmat involved
- ◆ Vapor Intrusion assessment and support to DOEE
- ◆ Ricin/Anthrax on Capital Hill Tech. support, cleanup, disposal, clearance

2022 State of the Union Address

March 1, 2022





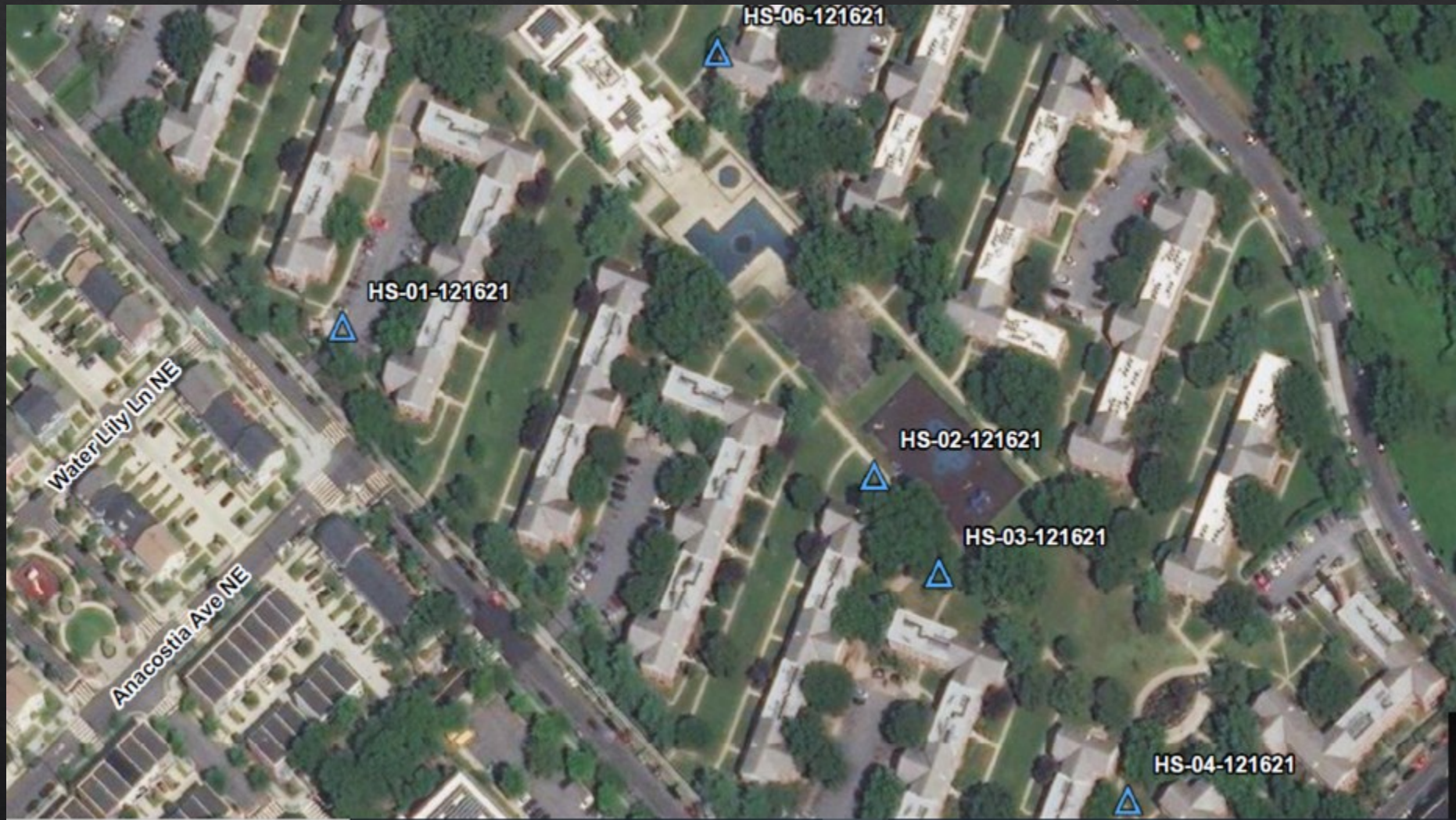
2021 Presidential Address to a Joint Session of Congress: Interagency Consequence Management Plan

April 28, 2021



FEMA

Response and Sites Examples



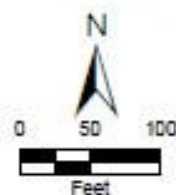






Legend

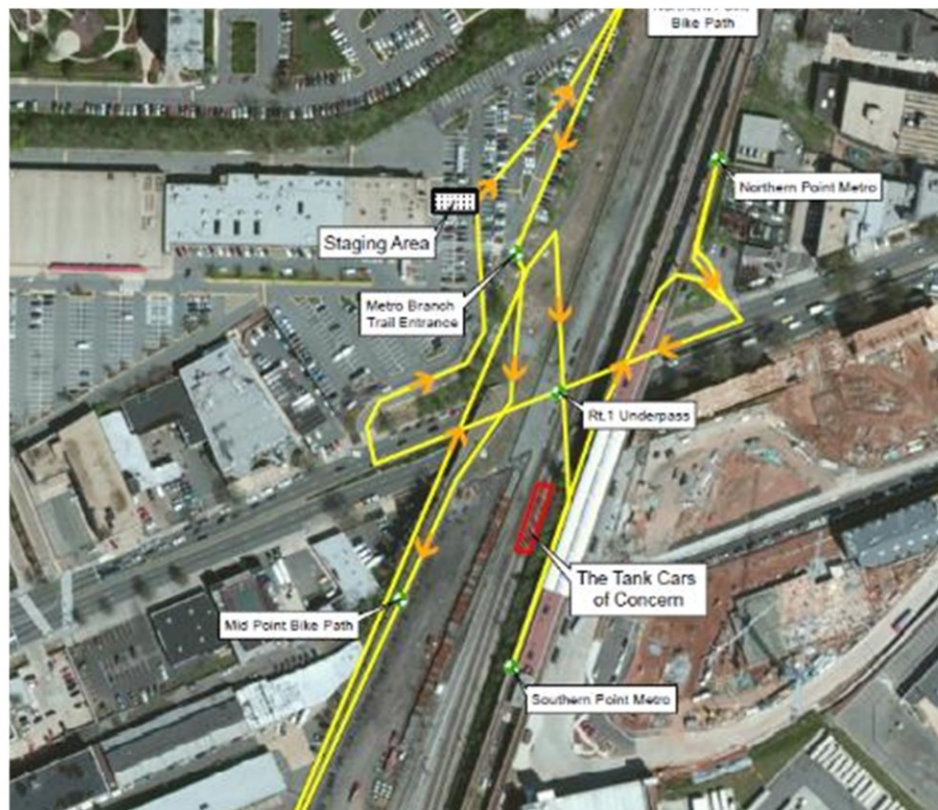
-  Indoor Air Sample
-  Ambient Air Sample
-  Former French's Cleaners
-  Former Z Cleaners
-  Growing Seeds Daycare Facility (1st floor)



French's Cleaners VI Assessment
Washington, DC

Figure 1
Air Sample Locations





Questions?

Laura Casillas, FOSC

701 Mapes Rd,

Ft. Meade, Md

Casillas.laura@epa.gov

410-430-8660 cell